



# The Autumn Auction Series

Fine Jewellery & Watches

Melbourne, 1 April 2019



**Jennifer Gibson**  
 CEO & Head of Valuations  
[Jennifer.Gibson@gibsonsauctions.com.au](mailto:Jennifer.Gibson@gibsonsauctions.com.au)



**Elliott Hughes**  
 Auctions Manager & Specialist  
[Elliott.Hughes@gibsonsauctions.com.au](mailto:Elliott.Hughes@gibsonsauctions.com.au)



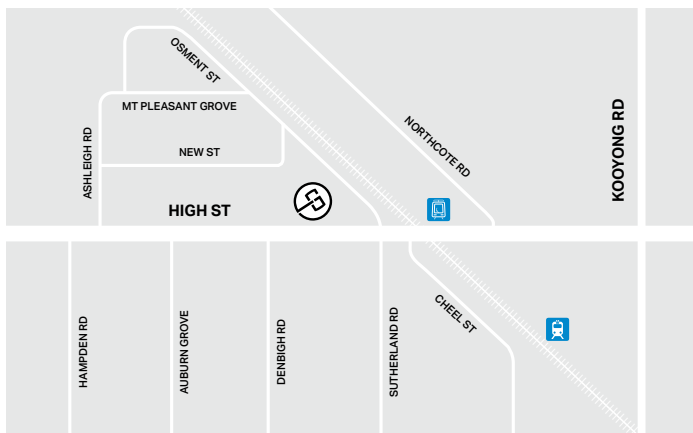
**Elizabeth Stannard**  
 Head of Jewellery  
[Elizabeth.Stannard@gibsonsauctions.com.au](mailto:Elizabeth.Stannard@gibsonsauctions.com.au)



**Simon Gibson**  
 CFO  
[Simon.Gibson@gibsonsauctions.com.au](mailto:Simon.Gibson@gibsonsauctions.com.au)



**Deanna Baxter**  
 Marketing & Client Services  
[Deanna.Baxter@gibsonsauctions.com.au](mailto:Deanna.Baxter@gibsonsauctions.com.au)



**Auction, Viewing and  
 Payment & Collections**  
 Level 1, 885-889 High Street  
 Armadale, Victoria 3143

FRONT COVER:  
Lot 45 (Detail)

BACK COVER:  
Lot 562 (Detail)

# The Autumn Auction Series

## Auction

Session I Monday 1 April 2019, 6.30pm (Lots 1 – 232)  
Session II Tuesday 2 April 2019, 2pm (Lots 233 – 580)  
Session III Tuesday 2 April 2019, 6.30pm (Lots 581 – 776)

Level 1, 885-889 High Street  
Armadale, Victoria 3143

## Viewing

Friday 29 March 10.00–4.00pm  
Saturday 30 March 10.00–4.00pm  
Sunday 31 March 10.00–4.00pm  
Monday 1 April 10.00–2.00pm

Auction Code: **GA005**

## GST

† Lots with this symbol are subject to GST on the hammer price and the buyer's premium.

## Buyer's Premium

Buyer's Premium is charged at 22% of the hammer price plus GST. GST is applicable to the buyer's premium only, unless otherwise indicated by the † symbol.

## Registration

To register to bid at Gibson's Auctioneers & Valuers an accredited form of photo identification is required. This applies to bidding in person at the auction, Telephone, Absentee and Online bidding.

## Resale Royalty Scheme

Lots subject to payment of the Artist's Resale Royalty Scheme will be denoted by the symbol §

The Australian Resale Royalty is a flat rate of 5% on the hammer price (including GST). The Australian Resale Royalty is payable by the seller in addition to the Buyers Premium plus applicable GST.

## Restricted or Organic Material

◆ Lots with this symbol have been identified at the time of cataloguing as containing organic material which may be subject to export or import restrictions. The absence of this symbol is not a guarantee that export or import restrictions will not apply. Please visit [www.cites.org](http://www.cites.org) for further information.

## Payments & Collections

Can be made from:  
Level 1, 885-889 High Street,  
Armadale, Vic 3143

Tue 2 April 9.00–12noon  
Wed 3 April 10.00–4.00pm  
Thu 4 April 10.00–4.00pm  
Fri 5 April 10.00–4.00pm

All goods must be collected and paid in full by 4pm on Friday 5 April (unless by prior arrangement) to avoid removal and storage charges.

All payments are to be made in Australian Dollars (AU\$).

Please refer to the methods of payment in the HOW TO BUY section on the following pages.

Credit card surcharges apply – 1.2% (incl GST) for Visa and Mastercard and 3% (incl GST) for American Express.

# How to Buy

All you need to know about the bidding process at auction

---

## Viewing

---

### Catalogues

Online catalogues can be viewed at [www.gibsonsauctions.com.au](http://www.gibsonsauctions.com.au) approximately three weeks prior to the auction date.

Complimentary printed catalogues are available at Gibson's Auctioneers & Valuers.

---

### Lot Descriptions

Lot Descriptions provide basic catalogue information such as dimensions, date or age, medium, attribution, provenance and quantity.

All lots are guaranteed for fourteen (14) days from the auction date.

---

### Estimates

Estimates are printed in the catalogue beside every lot and take into account rarity, condition, quality and provenance.

The reserve is the amount at which the item is available for purchase. The reserve is an undisclosed confidential amount which is set at, or below the low estimate.

The reserve will never exceed the low estimate at Gibson's Auctioneers & Valuers. Many lots are sold without reserve.

---

### Talk to our Specialists

Gibson's Auctioneers & Valuers are an experienced team of specialists who are available to discuss items in further detail, and to offer advice and assistance.

Contact details for relevant specialists can be found on the inside front cover our auction catalogues and on our website.

---

### Condition Reports

Condition Reports are available on request. Condition Reports supplement the lot description and provide information on the condition of an item.

We strongly advise obtaining a condition report if you are unable to view an item in person prior to the auction.

To request a condition report please email [condition.reports@gibsonsauctions.com.au](mailto:condition.reports@gibsonsauctions.com.au) with the auction title and lot number/s.

---

### Symbols

Occasionally, a symbol is printed next to a lot number, indicating a special clause associated with the sale of the item/s. Further information on symbols within our catalogues can be found on Page 1.

---

### Viewing

Auction viewings are open to the public and usually take place three or four days prior to the auction date, at the location/s listed in the auction catalogue and on the website.

---

## Bidding

Gibson's Auctioneers & Valuers offer four bidding options:

---

### 1. Auction Room Bidding

To bid in person we suggest you arrive early so that you have sufficient time to register for a bidding number prior to the auction. If this is your first time bidding with Gibson's Auctioneers & Valuers please bring photo identification, such as a driver's licence or passport with you.

---

### 2. Telephone Bidding

Gibson's Auctioneers & Valuers offer telephone bidding on all lots, at all auctions.

Telephone Bidding is a convenient solution if you are unable to attend an auction in person. A Gibson's Auctioneers & Valuers staff member will call you approximately 5 lots in advance and with your instruction, bid on your behalf at the auction.

Please note: Telephone Bids must be organised at least 24 hours prior to the auction and that occasionally, the number of telephone bidders available may be restricted when the auction is offsite.

To organise a Telephone Bid please follow the link to the Telephone Bidding form on our website: [www.gibsonsauctions.com.au](http://www.gibsonsauctions.com.au).

Please fill in & return via email to [mail@gibsonsauctions.com.au](mailto:mail@gibsonsauctions.com.au)

If this is your first time bidding with Gibson's Auctioneers & Valuers, an email address is to be supplied when you submit your Telephone Bid, along with clear Photo ID verifying your address.





### 3. Absentee Bids

Absentee Bidding is another convenient solution if you are unable to attend an auction in person, to speak on the telephone or if you simply have a strict budget.

An Absentee Bid should be set at the maximum amount you wish to bid on the lot/s you are interested in purchasing. Should the lot/s be knocked down at an amount lower than the bid recorded on your form, the lot will be sold to you for the lesser hammer price.

Please note Absentee Bids must be received at least 24 hours prior to the auction to allow time for processing.

To organise an Absentee Bid please follow the link to the Absentee Bidding form available on our website: [www.gibsonsauctions.com.au](http://www.gibsonsauctions.com.au).

Please fill in & return via email to [mail@gibsonsauctions.com.au](mailto:mail@gibsonsauctions.com.au)

If this is your first time bidding with Gibson's Auctioneers & Valuers, an email address is to be supplied when you submit your Absentee Bid, along with clear Photo ID verifying your address.

### 4. Online Bidding

Online bidding allows you to bid via the internet in real time with a live broadcast of the auction. To bid online visit our website and follow the 'Live Bidding' link under the 'Auctions' tab.

Please register for this service at least 24 hours prior to the auction to ensure you do not miss your lot.

Please note online bidding is powered by *Invaluable.com* and so will incur a 5% fee on successful lots.

If you have not bid with Gibson's Auctioneers & Valuers previously, a photo ID verifying your address will be required before you can be approved to bid. Please email to [mail@gibsonsauctions.com.au](mailto:mail@gibsonsauctions.com.au) as soon as practical.

### International Bidding

If you are bidding from overseas for the first time, you will be asked to provide a clear Photo ID verifying your address and a deposit (set at Gibson's Auctioneers & Valuers' discretion) prior to the auction. The deposit is refundable within 48 hours should you not be successful. If you are successful the deposit will be deducted from your invoice total. The remaining balance must be paid preferably by direct deposit.

Bank details are provided in the Payment & Collection section of this guide.

## Payment & Collection

### Payments

If you are successful an invoice (AU\$) will be emailed or posted to you immediately after the auction.

You will pay the hammer price, plus the buyer's premium (22% plus GST) on each Lot, together with any additional applicable charges such as GST on hammer.

Payments must be made in full by the final day of Collections as printed in the catalogue.

### Bank Transfer/Direct Deposit is our preferred method of payment:

Account Name: Gibson's Auctions  
 Bank: Bank of Melbourne (A division of St George)  
 BSB: 193879  
 Account No: 441701443  
 Swift Code: SGBLAU2S  
 Routing Code: 021000021  
 Bank Address: 197-201 Glenferrie Road, Malvern, Vic, 3144

- Personal, Company and Bank Cheques are not accepted without prior approval.
- Eftpos (no charge).
- Credit cards: Visa and Mastercard (1.2% inc GST merchant fee) and American Express (3% inc GST merchant fee).
- Please note that credit card transactions over \$5,000 will not be accepted over the telephone unless by prior arrangement.
- Cash payments up to AU\$10,000 can be accepted. For any amount over this, cash is to be deposited directly into our account at a Bank of Melbourne/St George branch.

### Collections

Gibson's Auctioneers & Valuers are happy to assist and provide you with recommended transport companies whether it be a local, interstate or international delivery.

### Storage

All items must be paid for and collected within the collection times advertised for each individual auction. If items are not collected within this time-frame, Gibson's Auctioneers & Valuers reserve the right to charge removal and storage fees.

# Fine Jewellery & Watches

Session I – Monday 1 April 2019, 6.30pm



1

1

## A PAIR OF ART DECO DIAMOND CLIPS BY GUBELIN

The geometric clips set throughout with round, emerald and baguette cut diamonds totalling 7.00cts, hallmarked Gubelin; mounted in platinum. Weight 19.4g. Length of each clip 2.7cms.

**\$13,000–16,000**

2

## A DOUBLE STRAND AKOYA PEARL NECKLACE

Comprising uniform pearls measuring 8.1mm, strung to a hexagonal old cut diamond set clasp, central diamond of an estimated 0.40cts; 18ct gold. Length 38cms. Retailled by Kozminsky.

**\$2,000–3,000**

3

## A SOUTH SEA PEARL AND DIAMOND JABOT PIN

Featuring an off round pearl measuring 9.2mm, diamonds totalling 0.56cts; 18ct white gold. Weight 5.5g.

**\$900–1,100**

4

## A VINTAGE DIAMOND SPRAY BROOCH

Designed as a floral set ribbon, set throughout with diamonds of an estimated 0.30ct; 18ct white gold. Weight 2.9g.

**\$300–500**

5

## A SAPPHIRE AND DIAMOND BOW BROOCH

Featuring an oval faceted sapphire of 0.98cts, embellished diamond set bow; 18ct white gold. Weight 10.8g.

**\$600–800**

6

## AN ART DECO DIAMOND BROOCH

The pierced plaque set throughout with diamonds, central transitional cut diamond of an estimated 0.55cts, total estimated diamond weight 1.90cts; mounted in platinum, Dutch marks. Weight 7.2g.

**\$1,800–2,400**

7

## A SAPPHIRE AND DIAMOND CLUSTER RING

Central sapphire of 0.53cts, surrounded and shouldered by round brilliant cut diamonds totalling 0.13cts; 18ct yellow and white gold. Ring size P. Weight 1.7g.

**\$700–900**

8

## A SOUTH SEA PEARL AND DIAMOND RING

Featuring a round pearl measuring 11mm, pave set diamond shoulders totalling 0.33cts; 18ct white gold. Ring size M. Weight 5.9g.

**\$1,600–1,800**

9

## A SAPPHIRE AND DIAMOND CLUSTER RING

Featuring an oval cut Ceylonese sapphire of 2.35cts, within a round brilliant cut diamond border; 18ct white and yellow gold. Ring size P. Weight 6g.

**\$2,000–3,000**

10

## AN AQUAMARINE AND DIAMOND COCKTAIL RING

Featuring an oval cut aquamarine of 4.77cts, within a grain set border of round brilliant cut diamonds totalling 0.65cts; 18ct white gold. Ring size N. Weight 6.4g.

**\$2,000–3,000**

11

## A PAIR OF SAPPHIRE AND DIAMOND FLOWER EARRINGS

Each earring pave set with round brilliant cut diamonds totalling 0.50cts, round cut sapphires; 18ct yellow and white gold. Weight 10.7g.

**\$2,200–2,400**

12

## A COLLECTION OF CULTURED PEARL JEWELLERY

Comprising two Akoya pearl necklaces, two brooches and a pair of earclips.

**\$400–600**



2



3



4



6



5

5



13

**13****A VINTAGE EMERALD AND DIAMOND CLUSTER RING**

Central emerald cut emerald of an estimated 6.00cts, old cut diamond set border totalling 1.90cts; 18ct gold. Ring size N. Weight 6.2g.

**\$7,000–9,000**

14

**14****AN EMERALD AND DIAMOND CLUSTER RING**

Featuring an emerald cut emerald of 3.80cts, within a rectangular border of round brilliant cut diamonds totalling 0.50cts; 18ct white gold. Ring size M. Weight 8.5g.

**\$4,000–6,000****15****AN EMERALD AND DIAMOND CLUSTER RING**

Centrally set with a faceted oval shaped emerald totalling 1.30cts, within a pierced millegrain plaque set with diamonds totalling 0.50cts, outer baguette cut emerald border of 0.70cts; 18ct white gold. Ring size O. Weight 3.9g.

**\$1,800–2,000****16****A BOULDER OPAL AND DIAMOND PENDANT**

Set with a freeform boulder opal of an estimated 20.00cts, wrap-around diamond set highlight totalling approximately 0.25cts; 18ct gold. Box chain necklace measuring 60cms. Total weight 20g.

**\$6,000–8,000****17****A VINTAGE EMERALD AND DIAMOND BROOCH**

Centrally set with an emerald of 3.90cts, within a diamond set rectangular pierced plaque with stylised fleur-de-lis terminals; 18ct white gold. Weight 5.8g.

**\$3,000–4,000****18****AN EMERALD AND DIAMOND CLUSTER RING**

Featuring an emerald cut emerald of 3.13cts, within a millegrain scalloped border set with round brilliant cut diamonds totalling 0.53cts; 18ct white gold. Ring size O. Weight 4.2g.

**\$3,800–4,200****19****A PAIR OF EMERALD AND DIAMOND EARRINGS**

Each earring featuring an emerald cut emerald of 1.30cts, surmounted by baguette cut diamonds totalling 0.25cts; 18ct white gold. Weight 3.3g.

**\$2,500–3,000****20****AN ANTIQUE STYLE EMERALD AND DIAMOND RING**

Featuring an emerald cut emerald of 1.72cts, within a pierced setting with a border of round brilliant cut diamonds totalling 0.39cts; mounted in platinum. Ring size O. Weight 7.4g.

**\$3,200–3,800**



15



16



17



20



18



19

**21**

A CULTURED PEARL NECKLACE  
Comprising one hundred and thirteen off round pearls measuring 8.1- 9.2mm, strung to a 14ct rose gold clasp. Length 116cm.

**\$300-600**

**22**

A CULTURED PEARL BRACELET  
Comprising four strands, strung to a 14ct yellow gold pearl set clasp. Length 18.5cm.

**\$200-300**

**23**

A MOTHER-OF-PEARL AND DIAMOND RING  
Designed as stylised butterfly wings, diamonds totalling 0.23cts; 18ct gold. Ring size O. Weight 3.9g.

**\$900-1,000**

**24**

AN OPAL AND DIAMOND RING  
Central oval cut black opal cut en cabochon, surrounded by round brilliant cut diamonds totalling 0.39cts; mounted in platinum. Ring size M. Weight 6.5g.

**\$1,400-1,800**

**25**

AN OPAL AND DIAMOND CLUSTER RING  
Featuring a white opal cut en cabochon of 3.50cts, diamond set border and shoulders totalling 0.50cts; in 18ct gold. Ring size O. Weight 5.1g.

**\$1,300-1,500**

**26**

AN AMETHYST AND DIAMOND COCKTAIL RING  
Set with chequerboard cut amethysts and round brilliant cut diamonds; 14ct gold. Ring size N. Weight 7.9g.

**\$800-1,000**

**27**

A PAIR OF CITRINE DROP EARRINGS  
The square fancy cut citrines, with diamond set drop; 18ct gold. Weight 7.1g.

**\$1,400-1,600**

**28**

A SOUTH SEA PEARL RING BY AUTORE  
Featuring a 12.4mm round pearl of light golden hue, textured gold mount; 18ct gold. Ring size N. Weight 13.3g.

**\$1,300-1,500**

**29**

A NATIVE AMERICAN CORAL AND TURQUOISE NECKLACE  
Featuring freeform tumbled turquoise and coral. Length 110cms.

**\$60-80 ♦**

**30**

A DOUBLE STRAND AKOYA PEARL NECKLACE  
Featuring uniform Akoya pearls measuring 5.9mm, strung to a diamond set floral clasp; 14ct gold. Length 36cms.

**\$300-500**

**31**

A VINTAGE MALACHITE NECKLACE  
Designed as spaced oval links, malachite cabochons, c.1970; 9ct gold. Weight 31.2g. Length 44cms.

**\$300-500**

**32**

A HEAVY GILDED SILVER NECKLACE  
Designed as flattened snake links. Weight 350g. Inner diameter 14.5cms.

**\$80-140**

**33**

A ROCK CRYSTAL AND DIAMOND HAT PIN  
Featuring a rock crystal lozenge measuring 3.5 x 1.3cms, outer border and terminals grain set with rose cut and old cut diamonds; mounted in platinum on a metal pin and fastener.

**\$500-800**

**34**

A SILVER PENDANT BY TIFFANY & CO  
Double tear drop pendant, Elsa Peretti collection, fully hallmarked T & Co; sterling silver. Length 40cms. Comes with T&Co pouch.

**\$160-180**

**35**

TWO VINTAGE NORWEGIAN ENAMEL AND SILVER BROOCHES  
One with blue enamel, the other pink(a/f), black, white and gold detail to terminals, Norwegian patent numbers to verso; 925 silver.

**\$60-80**

**36**

A PAIR OF ANTIQUE DIAMOND DROP EARRINGS  
Each set with vari-cut diamonds within a pierced target setting; 15ct gold and silver. Weight 9.4g.

**\$2,000-3,000**

**37**

A CORAL AND DIAMOND DRESS RING  
Central oval cut coral cabochon, within a round brilliant cut and tapered baguette diamond mount totalling 0.67cts; mounted in platinum. Ring size M. Weight 7.9g.

**\$1,500-2,000 ♦**

**38**

A PAIR OF CARVED JADE EARRING ATTACHMENTS  
Separate carved panels, mounted within gold frames, designed as 'thread-on' earring attachments; 14ct gold. Weight 21.2g. Length 5.5cms.

**\$500-700**

**39**

A CARVED JADE PENDANT  
The carved Buddha pendant suspended from an 18ct white gold chain. Weight 3.3g. Length 45cms.

**\$400-500**

**40**

AN ANTIQUE CORAL CAMEO AND SEED PEARL PENDANT  
The cameos featuring the figure of a lady in profile, scrolled frame, pearl set; 9ct gold, on an integral chain. Weight 4.1g.

**\$600-800 ♦**



**41**

**A SOUTH SEA PEARL AND DIAMOND RING BY PASPALEY**  
 From the iconic 'Creatures of the Sea' collection, featuring a South Sea Keshi pearl measuring 10mm, round brilliant cut diamond set starfish totalling 0.29cts; 18ct gold. Hallmarked Paspaley. Ring size N. Weight 9.7g. Original Paspaley inner and outer box and pouch.

**\$2,000–3,000**

**42**

**A DOUBLE STRAND AKOYA PEARL NECKLACE**  
 Uniform double strand of pearls measuring 6.1mm, closing to a clasp featuring an emerald cut emerald measuring 8.1 x 6.1mm, baguette and round brilliant cut diamonds totalling approximately 0.75cts; 18ct gold. Length 85cms.

**\$2,000–3,000**

**43**

**A MABE PEARL AND DIAMOND COCKTAIL RING**  
 Set with a mabe pearl measuring 19mm, diamond set ribbon mount totalling an estimated 0.20cts; 14ct white gold. Ring size O. Weight 13.8g.

**\$500–700**



41

43

42



44

**44****A PAIR OF EMERALD AND DIAMOND EARRINGS**

Each earring set with an oval cut emerald of 2.49cts, surrounded by round brilliant cut diamonds totalling 0.48cts, suspended from European backings; mounted in platinum. Weight 7.3g.

**\$7,500–8,000****45****AN IMPRESSIVE COLOMBIAN EMERALD AND DIAMOND PENDANT**

Featuring an oval faceted Colombian emerald of 34.60cts, within a border of round brilliant cut diamonds, set to an outer border of alternating pear shape and round brilliant cut diamonds, total diamond weight 3.27cts; 18ct white gold. Pendant weight 23.3g. Dimensions 4 x 3cms. On an 18ct white gold omega necklet. Weight 8.5g. Length 45cms. Independent valuation and GSL certificate available.

**\$70,000–100,000**







46

**46****AN AQUAMARINE AND DIAMOND RING**

Of cluster design, chequerboard cut aquamarine totalling 4.13ct, baguette and round brilliant cut diamonds of an estimated 0.43ct; mounted in platinum. Ring size O. Weight 8.1g.

**\$2,000–3,000****47****A MORGANITE AND DIAMOND COCKTAIL RING**

Centrally set fancy oval cut morganite of 12.95cts, bordered and shouldered by round brilliant cut diamonds totalling 0.60cts; 18ct rose gold. Ring size O. Weight 8.3g.

**\$2,400–2,800****48****A MORGANITE AND DIAMOND CLUSTER RING**

Featuring an oval cut morganite of 5.01cts, surrounded by a border of round brilliant cut diamonds totalling 0.39cts; 18ct white gold. Ring size N. Weight 5.9g.

**\$1,400–1,800****49****AN ANTIQUE STYLE DIAMOND RING**

The pierced vertical plaque set with two pear shaped aquamarines, central old European cut diamond totalling 0.56cts, further diamond detail; mounted in platinum. Ring size M. Weight 5.7g.

**\$4,400–4,600**

47

**50****AN ART DECO STYLE AQUAMARINE AND DIAMOND RING**

Featuring a fancy marquise cut aquamarine of 2.44cts, surrounded and shouldered by baguette and round brilliant cut diamonds totalling 0.46cts; 18ct white gold. Ring size M. Weight 4.8g.

**\$1,200–1,600****51****A DIAMOND PENDANT ON CHAIN**

Pendant of open, pierced detail, diamond set; platinum and 18ct gold. Conforming chain; 18ct gold. Length 45cms. Weight 4.8g.

**\$400–600****52****AN AQUAMARINE AND DIAMOND RING**

Centrally set round faceted aquamarine of 2.00cts, within a diamond set border, diamond set shoulders; 18ct white gold. Ring size M. Weight 4.3g.

**\$1,400–1,600****53****A PAIR OF AQUAMARINE AND DIAMOND CLUSTER EARRINGS**

Each circular cluster set with a round faceted aquamarine of 1.40cts, diamond set border; 18ct white gold. Weight 3.4g.

**\$1,600–1,800****54****AN AQUAMARINE AND DIAMOND RING**

Featuring a central oval cut aquamarine of 4.76cts, surrounded by a border of round brilliant cut diamonds totalling 0.40ct; 18ct white gold. Ring size O. Weight 4.1g.

**\$1,200–1,500****55****AN AQUAMARINE AND DIAMOND RING**

Comprising a pear shaped aquamarine of 4.45cts, within an angular double border of round brilliant cut diamonds totalling 0.21cts; 18ct white gold. Ring size O. Weight 4.4g.

**\$1,200–1,500****56****A MORGANITE AND DIAMOND RING**

Featuring a fancy chequerboard cut morganite of 3.59cts, round brilliant cut diamond set shoulders totalling 0.11cts; 18ct rose gold. Ring size N. Weight 3.7g.

**\$1,000–1,200****57****A VINTAGE FRENCH TUTTI FRUTTI BROOCH**

Styled as a floral spray, set with carved sapphires, rubies and diamond detail totalling 1.50cts, French marks; 18ct gold. Weight 9.1g.

**\$4,200–4,600**



48



49



50



51



58

**58****AN ANTIQUE DIAMOND CLUSTER RING**

Central transition cut diamond of 0.80cts, within a diamond surround totalling 0.50cts; in 18ct gold. Ring size K. Weight 3g.

**\$2,800–3,200**

59

**59****A THREE STONE DIAMOND RING**

Featuring a central round brilliant cut diamond of an estimated 1.30cts, flanked by two diamonds of 0.52cts, total estimated diamond weight 2.34cts; 18ct white gold. Ring size M. Weight 4.8g.

**\$5,000–7,000****60****A DIAMOND CIRCLE PENDANT**

Featuring a diamond set circle totalling 0.55cts; pendant 18ct white gold, chain 9ct white gold.

**\$1,500–1,800****61****A DIAMOND LINE NECKLACE**

Fully set with graduated round brilliant cut diamonds totalling 8.20cts; 18ct white gold. Weight 17.1g. Length 41cms.

**\$9,000–12,000****62****A PAIR OF DIAMOND STUD EARRINGS**

Each earring set in four claws with a single cushion cut diamond of 1.01cts and 1.02cts exclusively; 18ct rose gold. Total weight 2.2g.

**\$6,000–8,000****63****A DIAMOND LINE BRACELET**

Set with round brilliant cut diamonds totalling 3.90cts, closing to a double figure eight safety clasp; 18ct yellow gold. Weight 8.5g. Length 18cms.

**\$3,000–5,000****64****A DIAMOND LINE BRACELET**

Set with forty-five round brilliant cut diamonds totalling 3.95cts; in 18ct white gold. Length 16.5cms. Weight 7.3g.

**\$3,800–4,200****65****AN ANTIQUE STYLE THREE STONE DIAMOND RING**

Designed as a pierced plaque, filigree detail, three round brilliant cut diamonds totalling 0.39cts, further diamond detail totalling 0.12cts; 18ct yellow and white gold. Ring size N. Weight 3.6g.

**\$900–1,200****66****AN ANTIQUE DIAMOND CLUSTER RING**

Set with a diamond cluster and shoulders all totalling an estimated 0.40cts; 15ct gold. Ring size S. Weight 2.3g.

**\$800–1,000****67****AN ANTIQUE STYLE DIAMOND RING**

Featuring a filigree, pierced mount set with a central diamond of 0.78cts; mounted in platinum. Ring size M. Weight 4.1g.

**\$4,400–4,800****68****A DIAMOND DAISY RING**

Featuring an old cut diamond of 0.45cts, within a daisy border set with diamonds totalling 1.51cts; 18ct yellow and white gold. Ring size M. Weight 3.8g.

**\$2,500–3,000****69****A DIAMOND SOLITAIRE RING BY TIFFANY & CO**

Featuring a round brilliant cut diamond of 0.30cts, (Colour E, Clarity VVS1), six claw setting; 18ct white gold. Ring size L. Weight 3.6g. Comes with original Tiffany & Co certificate, inner and outer box.

**\$1,500–2,000****70****A DIAMOND SOLITAIRE RING**

Featuring a faceted pear shaped diamond of an estimated 1.00cts, baguette diamond set shoulders totalling 0.45cts; mounted in platinum. Ring size K. Weight 5.6g.

**\$4,000–6,000****71****A RUBY AND DIAMOND RING**

The wide band set with horizontal bands of carre cut rubies, vertical spacing bands with round brilliant cut diamonds, outer edge of the mount set with cabochon cut rubies, total ruby weight 1.89cts, diamonds totalling 0.13cts; 18ct white gold. Ring size L. Weight 12.2g.

**\$1,500–2,000**



63

60

62

61

64



72

**72****A BVLGARI B.ZERO1 RING**

From the B.zero1 collection, central integral spiral clasp by two outer bands, stamped Bvlgari; 18ct white gold. Ring size J. Weight 13g.

**\$1,000–1,500****73****A 'FUSION' RING BY GEORG JENSEN**

Designed by Nina Koppel as two interlocking bands: 18ct yellow and white gold. Stamped Georg Jensen, NK 49. Ring size K-L. Weight 9.1g. Width 7mm. Boxed.

**\$500–700**

73

**74****AN EMERALD AND DIAMOND RING**

Featuring a square faceted emerald of 2.05cts, within a diamond border, diamond set split shoulders; 18ct white gold. Ring size M. Weight 4.1g.

**\$2,400–2,800****75****A TANZANITE AND DIAMOND PENDANT**

Featuring a rectangular cushion cut Tanzanite of 4.98cts, within a round brilliant cut border and diamond set bale all totalling 0.50cts; 18ct white gold. Chain length 44cms. Total weight 4.3g.

**\$2,000–3,000****76****A PAIR OF DIAMOND KEEPER RINGS**

Square form, each set with diamonds totalling 0.16ct; one in 18ct yellow gold, the other 18ct white gold. Ring size N. Total weight 6.2g.

**\$500–700****77****A SOUTH SEA PEARL AND DIAMOND RING**

Set with a 13.4mm pearl, diamond set border totalling 0.30cts; 18ct yellow and white gold. Ring size L. Weight 7.3g.

**\$1,000–1,500**



78

**78****A LADY'S 'H HOUR'  
WRISTWATCH BY HERMÈS**

Stainless steel case and band, silvered dial, quartz movement, Swiss made, verso of case numbered HH1.210, 1144274, case measures 21x21mm. Comes with Hermès box and papers.

**\$1,000–1,500****79**

**A GROUP OF THREE LADY'S WATCHES** including a white metal Omega on material strap, a rolled gold antique watch of hexagonal form and a gold plated watch marked Rolex Oyster

**\$100–150****80****A PAIR OF REVERSIBLE SOUTH  
SEA PEARL STUDS**

Each earring featuring a South Sea pearl measuring 12.8mm, closing to a threaded back set with a cultured Akoya pearl, can be worn with either pearl to the front; 18ct gold. Weight 8.3g.

**\$900–1,200****81****A GOLD ART DECO BRACELET WATCH**

The hinged cocktail watch by Marti; 18ct gold. Weight 11.6g. Inner diameter 4.5cms.

**\$1,200–1,400****82****A PAIR OF SOUTH SEA PEARL,  
AMETHYST AND CITRINE  
DROP EARRINGS**

Each earring featuring an off-round 10.7mm pearl of pinkish white hue, suspended from an articulated row of citrines and one amethyst; 18ct gold. Weight 9.5g. Length 6cms.

**\$500–700****83****A PAIR OF ANTIQUE  
AUSTRALIAN CUFFLINKS**

Engraved panels, bullet backing, marked William Drummond; 9ct gold. Weight 3.1g.

**\$260–360****84****A JEWELLERY BOX WITH  
ASSORTED ITEMS**

Containing a vintage coin bracelet, European silver bracelet watch, amber pendants, aventurine quartz necklace, cufflinks, smokey quartz pendant and cufflink.

**\$100–200**



85

**85**

**A VICTORIAN SENTIMENTAL BROOCH**  
Featuring intricate scrolled and foliate detail, set with split and seed pearls, central panel with the pearl set initials BO; 18ct gold. Weight 10.9g.

**\$550–700****86**

**AN EMERALD AND DIAMOND BANGLE**  
The antique style hinged bangle set with emerald cut emeralds of an estimated 2.70cts, spaced by round brilliant cut diamonds of approximately 0.35cts; 18ct gold. Weight 16.7g. Inner diameter 5cms.

**\$2,400–2,800****87**

**AN ANTIQUE PERIDOT AND SEED PEARL PENDANT**  
The drop pendant set with a single peridot and seed pearls, suspended from a circular panel with inner pearl; 15ct gold. Weight 5g.

**\$800–1,000****88**

**AN ANTIQUE AMETHYST BROOCH**  
Central round faceted amethyst of an estimated 6.90cts, split double bar, scrolled and floral terminals; 9ct gold. Weight 3.8g.

**\$120–150****89**

**A VICTORIAN CITRINE AND PEARL BROOCH / PENDANT**  
Styled as a crown, heart shaped faceted citrine of an estimated 14.20cts, surmounted by a seed pearl set crown, hallmarked DJE; 9ct gold. Weight 6.8g. Length 3cms.

**\$300–400****90**

**AN ANTIQUE BAR BROOCH**  
The wide beaded panel, with engraved floral detail, set with a central glass seed pearl set horse shoe; 18ct gold. Weight 5.9g.

**\$300–500****91**

**A VINTAGE TURQUOISE AND SEED PEARL RING**  
Set with an oval turquoise cut en cabochon, surrounded by a border of seed pearls, pierced beaded gold shoulders; 14ct gold. Ring size L. Weight 9.6g.

**\$850–1,000****92**

**AN ANTIQUE GARNET BUCKLE RING**  
The buckle ring with engraved detail, garnet stone; 9ct gold. Ring size V. Weight 5g.

**\$800–1,000****93**

**A VICTORIAN TURQUOISE BROOCH**  
Stylised floral and beaded detail, central panel set with cabochon turquoise, vacant glass panel to verso; 9ct gold. Weight 5.7g.

**\$300–500****94**

**AN ANTIQUE GREEN SAPPHIRE AND DIAMOND RING**  
Featuring a sapphire of approximately 0.50cts, round brilliant cut diamonds totalling 0.45cts; 14ct yellow and white gold. Ring size T. Weight 2.4g.

**\$1,000–1,500**

86





87



88



90



89



92



91



93



95

**95**

A VINTAGE DIAMOND RING BY TIFFANY & CO  
Designed as a stylised feather, set with a line of round brilliant cut diamonds totalling 0.40cts, c.1970, stamped Tiffany; 14ct gold. Ring size M. Weight 10.1g.

**\$1,200–1,500**

96

**96**

A RARE SWAN RING BY VAN CLEEF & ARPELS  
Depicting two swans 'cheek-to-cheek', set with ruby eyes, emerald and diamond set collars, c.1960, stamped VCA C501319; 18ct gold. Ring size L. Weight 9.3g.

**\$7,000–9,000****97**

AN ITALIAN TURQUOISE AND DIAMOND FLOWER BROOCH / PENDANT  
Featuring a central cluster of turquoise cabochons and a single diamond, textured gold petals; 18ct gold, Italian marks. Weight 16.9g.

**\$500–700****98**

A GOLD LARIAT NECKLACE  
Twisted fancy link chain, terminating to tassel drops, slide attachment; 18ct gold. Weight 28.6g. Length 50cms.

**\$1,800–2,200****99**

A VINTAGE SAPPHIRE, RUBY AND DIAMOND BRACELET  
Featuring fancy links set with rubies totalling 7.00cts and sapphires totalling 7.00cts, c.1960; 18ct gold. Weight 101.6g. Length 18cms. Width 1.8cms.

**\$8,000–10,000****100**

A RETRO GOLD BRACELET  
Featuring bead and bulleted links, c.1950; 18ct rose gold. Weight 67g. Length 19cms. Width 2.5cms.

**\$4,000–6,000****101**

A PAIR OF DIAMOND COCKTAIL EARRINGS  
Each earring designed as three convex rows with rope twist detail, set with round brilliant cut diamonds totalling 1.40cts, c.1970; 14ct yellow and white gold. Weight 24.2g.

**\$4,000–6,000****102**

A FANCY LINK GOLD BRACELET  
Comprising four rows of fancy links, terminating to a clasp featuring the Chinese character representing longevity; 14ct gold. Weight 16.7g. Length 19cms.

**\$800–1,200****103**

A FLORAL BROOCH  
Designed as an orchid; 18ct tri-colour gold. Weight 13.42 grams. Length 5.5cm.

**\$450–500****104**

AN ANTIQUE FRENCH MINIATURE PORTRAIT PENDANT  
A portrait miniature of a lady, wearing peach dress, lace headdress adorned with floral decoration, watercolour on ivory, tapestry inlay to verso; silver-gilt mount with pearl highlights. Measures 5.5 x 4.5cms. Comes on a 15ct gold chain.

**\$7,000–9,000 ♦****105**

A COLOUR-CHANGE GARNET RING  
Featuring an oval cut garnet of approximately 1.90cts, flanked by brilliant cut diamonds totalling 0.38cts; mounted in platinum. Ring size L. Weight 6.1g.

**\$1,500–2,000****106**

A BLACKAMOOR EMERALD AND DIAMOND BROOCH  
The carved head with bust adorned with emerald and diamonds, signed S.Nardi to verso; 18ct gold. Weight 7.1g.

**\$1,800–2,000****107**

AN ONYX AND DIAMOND RING  
The band featuring a cabochon cut onyx lozenge, diamond set shoulders totalling an estimated 0.30cts; 18ct gold. Ring size N. Weight 9.8g.

**\$1,500–1,700**



97



98



99



101



100



108

**108****A RUBY AND DIAMOND RING**

Featuring a rectangular step cut ruby of 0.68cts, flanked by baguette cut diamonds totalling 1.24cts; mounted in platinum. Ring size N. Weight 5.2g.

**\$4,000–5,000**

**109****A RUBY AND DIAMOND PENDANT BY BVLGARI**

Designed as a cross, set with a central square cut diamond of 0.30cts, four square cut rubies totalling 1.40cts; 18ct gold. On a conforming chain stamped Bvlgari. Length 42cms. Total weight 6.4g.

**\$2,800–3,200**

**110****A RUBY BROOCH**

Designed as grapes and leaves, set with cabochon rubies; 14ct yellow gold. Weight 11.67 grams. Length 4cm.

**\$250–450**

**111****A RUBY AND DIAMOND CLUSTER RING**

Featuring an oval cut Burmese ruby of 3.52cts, surrounded by round brilliant cut diamonds totalling 1.12cts; 18ct white gold. Ring size P. Weight 6.2g.

**\$5,000–7,000**



109

**112****A RUBY, DIAMOND AND ENAMEL RING**

Exotic bombe style mount with foliate enamel design, set with a central faceted ruby and polki diamonds; 18ct gold. Ring size M. Weight 13.8g.

**\$1,200–1,500**

**113****A PAIR OF RUBY EARRINGS AND A MATCHING RING**

Stylised floral cluster, each set with three rubies cut en cabochon; 18ct gold. Ring size O. Total weight 6.9g.

**\$2,200–2,600**

**114****A SAPPHIRE, RUBY AND DIAMOND RING**

Featuring a central old cut diamond of 0.94cts, flanked by a ruby and a sapphire, outer diamond border and surround totalling 1.50cts; 18ct white and yellow gold. Ring size P. Weight 7.1g.

**\$10,000–12,000**

**115****A RUBY BAND RING**

The band ring featuring six hammer set rubies totalling 0.63cts; 18ct white gold. Ring size P. Weight 6.4g.

**\$500–700**

**116****A PAIR OF RUBY AND DIAMOND EARRINGS**

Each earring designed as a cluster, set with an oval cut Burmese ruby of 2.27cts, surrounded by round brilliant cut diamonds totalling 0.26cts; 18ct white gold. Weight 7.1g.

**\$5,000–7,000**

**117****A RUBY AND DIAMOND NECKLACE**

Floral drop, rubies totalling 3.00cts, two diamonds each of an estimated 0.20ct; 18ct gold. Weight 8.1g.

**\$1,000–1,200**

**118****AN OPAL AND DIAMOND RING**

Featuring a white opal cut en cabochon, surrounded by diamonds totalling 0.69cts; 14ct white gold. Ring size O. Weight 5.4g.

**\$2,000–3,000**

**119****AN ANTIQUE GEM SET ROOSTER BROOCH**

Set with pink sapphires and old mine cut diamonds totalling 1.00ct; sterling silver and 9ct gold. Weight 15.17g.

**\$2,500–3,000**





120

**120**

**A MODERNIST GOLD NECKLACE**  
Textured brushed gold links, each pinned to an extra circle link, can be worn at varying lengths; 18ct gold. Weight 67.1g. Length 48cms. Retailed by Kozminsky. Boxed.

**\$2,000–3,000****121**

**A PAIR OF TOPAZ EARRINGS**  
Each earring featuring a faceted pear shaped topaz, within a satin finish disc; 18ct gold. Weight 10.7g.

**\$600–800****122**

**A CARVED JADE BUDDHA PENDANT**  
Featuring a carved jade buddha, seated within a gold temple, stone set, on a gold chain; all 18ct gold. Weight 22.6g. Chain length 49cms.

**\$1,500–1,800****123**

**A EUROPEAN GOLD COLLAR**  
Of woven design; 18ct yellow gold. German. Weight 56 grams. Length 430mm.

**\$1,800–2,200****124**

**AN ANTIQUE DIAMOND CROSS PENDANT**  
Set throughout with diamonds totalling approximately 3.00cts; 15ct gold and silver. Weight 7.9g.

**\$2,000–3,000****125**

**A MOTHER-OF-PEARL AND DIAMOND PENDANT**  
The pear shaped Mother-of-Pearl pendant measuring 3.5 x 4cms, suspended from a diamond set bale totalling 0.08cts; 18ct gold bale. On a silver chain. Length 38cms.

**\$400–600****126**

**AN EMERALD AND DIAMOND DRESS RING**  
Featuring a faceted pear shaped emerald of an estimated 2.00cts, round brilliant cut diamond set border and foliate shoulders totalling 0.50cts; 18ct yellow and white gold. Ring size N. Weight 5.1g.

**\$2,200–2,600****127**

**A PAIR OF AQUAMARINE AND DIAMOND DROP EARRINGS**  
Each set with a pear shaped faceted aquamarine totalling 3.23cts, suspended from diamond drops totalling 0.15cts; 18ct white gold. Weight 4.8g. Length 3cms.

**\$1,400–1,600****128**

**A GOLD AND DIAMOND CURB LINK CHAIN NECKLACE**  
Featuring a graduated curb link chain with five central diamond set links; 9ct yellow and white gold. Weight 83.3g. Length 43cms.

**\$2,800–3,200**

121



129

**129****AN ART DECO STYLE SAPPHIRE AND DIAMOND RING**

Designed as a pierced plaque, set throughout with round brilliant cut diamonds, caré cut sapphires to the border; 15ct white gold. Ring size J. Weight 7.9g.

**\$1,400–1,800**

130

**130****A SAPPHIRE AND DIAMOND CLUSTER RING**

Featuring an oval cut faceted sapphire of 2.80cts, surrounded by a border of round brilliant cut diamonds totalling 1.25cts; 18ct yellow and white gold. Ring size M. Weight 7.0g.

**\$3,000–4,000****131****A SAPPHIRE AND DIAMOND CLUSTER RING**

Of scalloped design, set with an oval cut Ceylonese sapphire of 1.01cts, tapered baguette and round brilliant cut diamond mount totalling 1.17cts; mounted in platinum. Ring size P. Weight 8.4g.

**\$3,000–5,000****132****A SAPPHIRE AND DIAMOND CLUSTER RING**

Featuring an oval cut Ceylonese sapphire of an estimated 3.50cts, surrounded by round brilliant cut diamonds totalling 0.50cts; mounted in platinum. Ring size L. Weight 6.7g.

**\$3,000–5,000****133****A PAIR OF SAPPHIRE AND DIAMOND DROP EARRINGS**

Each featuring an oval cut faceted sapphire of 2.61cts, surrounded by round brilliant cut diamonds totalling 0.15cts; in 18ct white gold. Weight 6g. European backings.

**\$6,000–8,000****134****A SAPPHIRE AND DIAMOND CLUSTER RING**

Centrally set oval faceted sapphire of 2.34cts, surrounded by millegrain set round brilliant cut diamonds totalling 0.40cts; 18ct white gold. Ring size N. Weight 4.4g.

**\$2,500–3,000****135****A TANZANITE AND DIAMOND CLUSTER RING**

Featuring an oval shaped faceted Tanzanite of 1.68cts, bordered and shouldered by round brilliant and baguette cut diamonds all totalling 1.50cts; 18ct white gold. Ring size L. Weight 4.8g.

**\$2,500–3,000****136****AN AQUAMARINE AND DIAMOND COCKTAIL RING**

Set with an emerald cut aquamarine of 10.48cts, surrounded by round brilliant cut diamonds totalling 0.44cts; 18ct white gold. Ring size N. Weight 8.2g.

**\$3,500–4,000****137****A PAIR OF SAPPHIRE AND DIAMOND FLOWER EARRINGS**

Each earring set with pear shaped sapphires totalling 2.92cts, round brilliant cut diamond set petal borders totalling 0.22cts; 18ct white gold. Weight 7.2g.

**\$2,500–3,000****138****A SAPPHIRE AND DIAMOND CLUSTER RING**

Featuring an oval cut sapphire of 1.55cts, surrounded by a round brilliant cut diamond border; 18ct white gold. Ring size R. Weight 4.9g.

**\$1,800–2,000****139****A PAIR OF CITRINE DROP EARRINGS**

Featuring briolette cut citrines, suspended from a diamond set leaf drop; 14ct gold. Weight 5g.

**\$400–600****140****AN ABSTRACT DIAMOND PENDANT**

Freeform design, textured gold, diamonds totalling 1.30cts, on an integral diamond spacer chain; 18ct gold and platinum. Weight 13.4g. Length 41cm.

**\$1,500–2,000**



131



132



133



134



135



141

**141****AN ANTIQUE EUROPEAN SILVER NECKLACE**

Of Belle Epoque design, set with paste stones; stamped 800 silver. Weight 6.6g. Original fitted box.

**\$80–120****142****A CORAL PENDANT**

Styled as an angel holding a coral ball and an articulated love heart; 9ct gold. Weight 7.3g.

**\$300–500 ♦****143****A MOGUL STYLE GEM SET BROOCH**

Open pierced design, set throughout with rubies, diamonds and emeralds, central oval cut emerald of 1.00cts, diamonds totalling 0.44cts; 18ct yellow and white gold. Weight 12.6g.

**\$2,400–3,400****144****A RUBY ETERNITY BAND**

The full hoop channel set with round cut rubies totalling 1.08cts; 18ct white gold. Ring size N. Weight 4.4g.

**\$900–1,200****145****A GROUP OF VINTAGE JEWELLERY**

Three items including an Art Deco onyx and malachite inlaid brooch, an Art Deco bakelite pendant on cord and a silver and malachite beaded necklace.

**\$180–240****146****AN ANTIQUE SHELL CAMEO BROOCH**

Depicting the profile of a lady, pierced floral and foliate mount; 9ct rose gold. Brooch weight 4.7g. Comes on a base metal trace chain.

**\$100–150****147****A EUROPEAN GOLD BROOCH**

Of textured knot design; 18ct yellow gold. German. Weight 19.25 grams. Width 3.5cm.

**\$650–750****148****AN EMERALD AND DIAMOND RING**

Comprising an emerald cut emerald of an estimated 1.50cts, flanked by baguette cut diamonds totalling 0.30ct; 18ct gold. Ring size N. Weight 2.7g.

**\$1,500–1,800****149****A SAPPHIRE AND DIAMOND FIVE STONE RING**

Set with five faceted oval cut Ceylonese sapphires totalling 4.95cts, surrounded by round brilliant cut diamonds totalling 0.69cts; 18ct white gold. Ring size M.

**\$2,800–3,200****150****A RUBY AND DIAMOND RING**

Centrally set with an oval cut Mozambique ruby of 1.80cts, shouldered by six round brilliant cut diamonds totalling 0.25cts; mounted in platinum. Ring size M. Weight 4.3g.

**\$2,200–2,600****151****A PAIR OF AQUAMARINE, DIAMOND AND ONYX DROP EARRINGS**

Each earring set with a rectangular chequerboard cut aquamarine of 5.23cts, suspended from an onyx and diamond drop; 18ct white gold. Weight 8g. Length 4cms.

**\$1,800–2,000****152****A PERIDOT AND DIAMOND RING**

Featuring an oval cut peridot of an estimated 9.80cts, shouldered by round brilliant cut diamonds totalling 0.30cts; 18ct white gold. Ring size L. Weight 7.6g.

**\$2,200–2,600****153****AN EMERALD AND DIAMOND RING**

Of cluster design, central emerald cut emerald of 1.59cts, round brilliant and tapered baguette cut diamond mount totalling 0.27cts; mounted in platinum. Ring size N. Weight 6.2g.

**\$2,000–3,000****154****AN ANTIQUE STYLE SAPPHIRE AND DIAMOND RING**

Featuring three sapphires totalling 1.09cts, diamond highlights, pierced filigree mount; 18ct gold. Ring size P. Weight 4.9g.

**\$1,200–1,500**





155

**155**

AN ART NOUVEAU BROOCH  
Arts and Crafts design, set with Mother-  
of-Pearl and two rubies; 9ct rose  
gold. Makers mark WB. Weight 2.2g.

**\$200–300**

**156**

AN EDWARDIAN MOONSTONE AND  
SAPPHIRE PENDANT DROP NECKLACE  
Featuring a drop of alternating  
moonstones and sapphires;  
9ct orange blossom gold.  
Weight 5g. Length 40cms.

**\$300–400**



156

**157****A GROUP OF THREE  
DIAMOND SET BANGLES**

Each hinged bangle set with round brilliant cut diamonds totalling 0.32ct, two with white diamonds, one featuring cognac diamonds; 18ct yellow, white and rose gold. Total weight 17.7g.

**\$3,600–4,000**

**158****A PEARL BROOCH**

Of abstract design, set with a cluster of Akoya pearls; 14ct yellow gold. Weight 16.45 grams. Length 4.5cm.

**\$550–650**

**159****A PAIR OF PEARL EARCLIPS**

Each set with a vertical line of Akoya pearls; 14ct yellow gold. Weight 6.93 grams.

**\$120–180**

**160****A DIAMOND BAND RING**

Featuring a double inner row of princess cut diamonds, bordered by pave-set round brilliant cut diamonds, total diamond weight 3.25cts; 18ct white gold. Ring size K. Weight 10.8g.

**\$2,500–3,000**

**161****AN EMERALD AND DIAMOND  
THREE STONE RING**

Featuring three faceted oval cut emeralds totalling 4.30cts, each surrounded by a border of round brilliant cut diamonds totalling 0.50cts; 18ct gold. Ring size M. Weight 5.6g.

**\$2,500–3,000**

**162****AN EMERALD AND DIAMOND  
CLUSTER RING**

Centrally set emerald cut emerald of 3.37cts, within a pierced hexagonal diamond set border totalling 0.29cts; 18ct white gold. Ring size M. Weight 4.4g.

**\$3,000–4,000**

**163****A PAIR OF SMOKY QUARTZ  
AND DIAMOND EARRINGS**

Each earring set with a smoky quartz of 4.85cts, suspended from a pave set champagne diamond drop totalling 0.62cts; 14ct rose gold. Weight 6.5g.

**\$1,000–1,200**

**164****AN EMERALD AND  
DIAMOND BAND RING**

Set with five faceted oval cut emeralds totalling 2.87cts, diamond highlights; 18ct white gold. Ring size O. Weight 3.2g.

**\$900–1,200**

**165****A PAIR OF EMERALD AND  
DIAMOND EARRINGS**

Floral cluster drops, emeralds totalling 0.50cts, diamonds of an estimated 0.35cts; 18ct rose gold. Weight 7.5g.

**\$1,500–2,000**

**166****A GROUP OF VINTAGE JEWELLERY**

Two items of vintage jewellery, a rolled gold shell cameo brooch and a charm bracelet with various silver and metal charms, closing to a silver locket; metal chain bracelet.

**\$60–80**

**167****A GROUP OF SIX VINTAGE  
SILVER BROOCHES**

Of various forms, set with marcasite, amethyst, chrysoprase and paste stones.

**\$60–80**

**168****AN ANTIQUE ENAMEL AND  
DIAMOND BROOCH**

Styled as a four leaf clover, foliate decoration, set with a central old European cut diamond of an estimated 0.28cts; 14ct gold. Weight 7.2g.

**\$1,200–1,500**

**169****A GOLD BANGLE**

The hinged bangle with engraved detail; 14ct gold. Weight 30.5g. Inner diameter 6cms.

**\$1,400–1,600**





170

**170**

**A DIAMOND SOLITAIRE RING**  
Featuring a round brilliant cut diamond of 1.53cts, within a four claw setting; 18ct white gold. Ring size N. Weight 3.6g.

**\$6,000–8,000**

171

**171**

**AN EMERALD AND DIAMOND RING**  
Featuring a central oval cut emerald of an estimated 1.95cts, within a pierced diamond set border; mounted in platinum. Ring size N. Weight 5.4g.

**\$3,400–4,400**

172

**171**

**A DIAMOND SOLITAIRE RING**  
Featuring a round brilliant cut diamond of 1.49cts, set within four claws; 18ct white gold. Ring size K-L. Weight 3.1g. GSL certificate stating colour F, clarity VVS1.

**\$14,000–16,000****172**

**A DIAMOND SOLITAIRE RING**  
Featuring a round brilliant cut diamond of 1.69cts, within a six claw setting; 18ct white gold. Ring size N. Weight 3g. GSL certificate stating colour H, clarity VS1.

**\$15,000–18,000****173**

**A DIAMOND SOLITAIRE RING BY TIFFANY & CO**  
Featuring a central round brilliant cut diamond of 0.25cts (Colour E, Clarity VVS2), six claw setting; 18ct white gold. Ring size I-J. Weight 3.8g.

**\$1,000–1,500****174**

**A DIAMOND ETERNITY BAND**  
Featuring a full hoop set with baguette cut diamonds totalling 3.25cts; 18ct white gold. Ring size L. Weight 5.2g.

**\$3,000–5,000****175**

**A DIAMOND SOLITAIRE RING**  
Featuring a round brilliant cut diamond of 0.60cts; 14ct rose and white gold. Ring size S. Weight 3.4g.

**\$1,400–1,600****176**

**A DIAMOND SOLITAIRE RING**  
Featuring a round brilliant cut diamond of 0.60cts; 14ct rose and white gold. Ring size S. Weight 3.4g.

**\$1,400–1,600****177**

**A SPLIT BAND DIAMOND RING**  
Designed as three fused bands, set with two faceted polki diamonds; 14ct gold. Ring size K. Weight 9.9g.

**\$500–700****178**

**TWO GOLD RINGS**  
One set with amethyst, the other jade; 18ct and 14ct yellow gold. Weight 7.26 grams.

**\$220–280****179**

**A PAIR OF GARNET DROP EARRINGS**  
Each earring set throughout with pear shaped faceted garnets; 14ct rose gold. Weight 12.6g.

**\$500–700****180**

**AN ANTIQUE DIAMOND AND ENAMEL MOURNING BROOCH**  
Engraved detail, enamel panels set with pear shape and old cut diamonds totalling 0.30cts; 14ct gold. Weight 6g.

**\$500–800****181**

**A PAIR OF GOLD MASONIC CUFFLINKS**  
The shields engraved with the Masonic symbol, bullet backing; 9ct gold. Weight 5g.

**\$300–400****182**

**AN EMERALD AND DIAMOND RING**  
Featuring three oval cut emeralds totalling 0.60cts, spaced by round cut diamonds; 14ct white gold. Ring size L. Weight 2.4g.

**\$140–200****183**

**AN OPAL AND DIAMOND RING**  
The freeform white opal, set with a diamond highlight border; 18ct gold. Ring size M. Weight 10.7g.

**\$1,800–2,000**

## Property from a Private Collection Melbourne

### 184

A pair of George III sterling silver  
candlesticks, London 1763  
total weight 1268 gms,  
28cm high (each)

**\$1,200–1,500**



### 185

A large Edward VII sterling  
silver butler's tray  
by Baker Brothers, Birmingham, 1902  
retailed by Sharman D. Neill, Belfast,  
3278gms, 72cm across the handles

**\$1,500–2,500**

### 186

A George III Irish sterling silver  
footed dish marked JL possibly for  
John Laughlin, Junior, John Lloyd,  
Senior, or John Locker, circa 1780  
172gms, 7cm high, 14cm diameter

**\$600–800**

### 187

A Georgian sterling silver  
sauce boat, circa 1840  
maker's and date marks rubbed  
511gms, 22cm wide

**\$400–600**

### 188

A set of twelve Victorian sterling silver  
fruit knives and forks by Goldsmiths &  
Silversmiths Company, London, 1895  
sterling silver blades and tines,  
within a fitted oak canteen

**\$600–800**

### 189

An associated George III and IV  
sterling silver cruet set mixed  
maker's marks and dates  
total weight of the stand  
1485 gm, 26cm high

**\$400–600**



**190**

A pair of George III sterling silver serving tureens and covers by Rundell, Bridge & Rundell (John Bridge), London 1825 total weight 4298 gms, 14cm high, 30cm wide, 22cm deep (each)

**\$3,000–5,000**

190

**191**

A Victorian sterling silver spirit kettle on stand by Creswick & Co (Thomas, James & Nathaniel Creswick), Sheffield 1851 total weight 1865 gms, 63cm high overall

**\$800–1,200**

**192**

A French silver Boin Taburet a Paris ebony handled chocolate pot, in the Louis style, circa 1880 marked Boin taburet a Paris total weight 414gms, 19cm high

**\$400–600**

**193**

A small collection of English sterling silver, George III and later comprising a pap boat, two condiment spoons and a mustard pot with spoon the pap boat 24 gms, 11 cm long

**\$200–300**



191





194

**194**

A set of four George III sterling silver salts with gilt wash interior by Thomas Dicks, London 1813 total weight 374 gms, 3.5cm high, 10cm wide, 7.5cm deep

**\$400–600**



195

**195**

A Victorian sterling silver swing handle bread basket by John Kilpatrick, London 1875 and stamped 1046 820 gms, 7.5cm high, 31cm wide, 24.5cm deep

**\$500–800**

**196**

A pair of George III Irish sterling silver sauce boats, by Richard Williams, Dublin, circa 1775 total weight 933 gms, 15cm high (each)

**\$1,000–1,500**



196

**197**

A harlequin Victorian sterling silver melon form four-piece tea and coffee service, circa 1874 three pieces marked London TJNC 1875, the coffee pot by W. Spurrier and Co., Birmingham 1874 total weight 2276gms, the coffee pot 24cm high

**\$2,000–3,000**

**198**

A set of six George II silver gilt spoons, London, 1720 and later each later decorated as berry spoons with embossed flowers and leafage, later crest, maker's include Edward Dobson, William Pryor and James Williams, James Wilks and John Holland I total weight 270 gms, the longest 19.5cm

**\$200–300**





199

**199**

A harlequin suite of Old English pattern sterling silver cutlery by Chawner & Co., London, circa 1865 and later a setting for twelve, comprising 84 items 2651gms (excluding knives)

**\$3,000–5,000**

**200**

A set of twelve mother-of-pearl handled fruit knives and forks, circa 1900 with plated blades and sterling silver cuffs, within a fitted wooden canteen

**\$100–200**

**201**

A pair of George III sterling silver ladles, by Solomon Hougham, London 1814 together with a set of George III silver sugar tongs and a toddy ladle total weight 200 gms, toddy ladle 30cm long

**\$200–300**

**202**

A Victorian sterling silver carving set by John Gilbert, Birmingham 1873 with chased and embossed scrolling vine decoration, conforming sterling silver blades, within a fitted tooled leather case 216gms, the knife 30cm long

**\$200–300**

**203**

A pair of George III sterling silver ladles, by George Smith (III) & William Fearn, London 1790 together with a pair of George III sterling serving spoons, William Eley, William Fearn & William Chawner, London 1801 total weight 213 gms, the longest 21.5cm

**\$200–300**

**204**

Two George III sterling silver bottle coasters, London, circa 1805 maker's and date marks rubbed total weight 288 gms, 9cm high, 14cm diameter

**\$200–300**

**205**

A William IV sterling silver helmet jug, (probably) by John Merry, London, 1832 112 gms, 16cm high

**\$200–300**

**206**

A Pair of Edward VII sterling silver pierced bon-bon dishes by Roberts & Belk Ltd, Sheffield, 1904 98gms, 14cm diameter (each)

**\$300–500**

**207**

A collection five English sterling silver berry and sifter spoons, 18th century and later comprising two pierced ladles and three berry spoons total weight 262 gms, the longest 22.5cm

**\$200–300**





208

**208**

A George IV sterling silver tray,  
London 1829  
maker's mark rubbed, foliate  
incised decoration  
1075 gms, 3.5cm high, 35cm diameter

**\$400–600****209**

A George II sterling silver tray, by  
Robert Abercromby London 1736  
central incised cartouche  
1254 gms, 35cm diameter

**\$400–600****210**

A George III sterling silver cover and  
handle by Paul Storr, London circa 1820  
of shaped lobed form with a finely cast  
scrolling acanthus leaf handle together  
with an associated Sheffield plate base

**\$1,200–1,500****211**

A pair of Victorian sterling silver  
fish servers, by Henry Wilkinson  
& Co., Sheffield, 1861  
foliate incised decoration  
total weight 426 gms

**\$100–200****212**

Two George III sterling silver  
sugar casters, London 1802  
maker's and date marks rubbed  
95 gms, 15cm high (each)

**\$300–500****213**

A small Dutch silver tea caddy box with  
English export marks, 19th century  
189gms, 12cm high,  
9.5cm wide, 7cm deep

**\$200–300**

209

## Other Properties



214

### 214

A Victorian sterling silver salver by Walker & Hall, Sheffield 1873  
864 gms, 31cm diameter

**\$400-600**

### 215

A Victorian sterling silver tray by Harrison Brothers & Howson, Sheffield, 1896  
1977 gms, 58.5cm wide, 33cm deep

**\$1,000-1,500**

### 216

A pair of small Georgian style sterling silver sauce boats by Martin Hall & Co Ltd, Sheffield, 1913  
total weight 170 gms,  
8cm high, 8cm diameter

**\$200-300**

### 217

A cased set of sterling silver teaspoons by Martin, Hall & Co., Sheffield 1898  
together with five continental  
silver teaspoons  
total weight 135 gms

**\$50-100**



215



218

**218**

A silver plated Victorian chatelaine  
with sterling silver fob watch case

**\$200–300**

**219**

A pair of George V reticulated  
silver vases, by William Comyns  
& Sons, London 1913  
each of shaped rectangular form  
with chamfered corners, finely  
pierced with interlocking foliate  
scrolls, the shoulders applied with  
ribbon and husk flower patera  
flanked by lion mask drop-ring  
handles and raised on scrolling  
acanthus feet, the base further  
incised 925 Gebr. Friedlander,  
with amethyst glass liners  
1560gms, 21 cm high

**PROVENANCE**

Christie's New York, sale number 7225,  
Silver, September 20, 1991, lot 47.

**\$2,000–3,000**



219



220

**220**

A sterling silver and tortoiseshell jewellery box probably by Charles Boyton & Son Ltd, marks for Birmingham, 1938 12.5 diameter together with a sterling silver and tortoiseshell jewellery box by Goldsmiths & Silversmiths Co Ltd, Birmingham, 1924 17cm diameter

**\$500–800****221**

A William Hutton & Sons Art Nouveau sterling silver and enamel photograph frame, London 1902 18cm high, 18cm wide

**\$800–1,200****222**

Four Victorian sterling silver berry spoons and a ladle by John William Kilpatrick, London 1886 250 gms

**\$200–300**

222



221

**223**

A pair of Georgian Sheffield plate gadroon decoration candlesticks total weight 1209 gms, 23.5cm high (each)

**\$100–200****224**

A George V sterling silver pierced V bon dish by Mappin & Webb Ltd, London 1916 together with a travelling clock and an Indian silver bell the bell 13cm high

**\$100–200**

**225**

A Georgian sterling silver salver by William Bennett, London 1799  
542 gms, 23cm diameter

**\$300–500**

**226**

An English silver plate mounted claret jug, 19th century  
28cm high

**\$50–100**

**227**

Two Scottish sterling silver mounted horn cups  
11.5cm and 12.5 high

**\$200–300 ♦**

**228**

A pair of Edward VII sterling silver shell form butter dishes by Fenton Russell & Co. Ltd, Sheffield, 1902  
12cm long, 72.3 gms

**\$200–300**



225

**229**

A collection of Kings pattern silver cutlery by Johnson, Walker & Tolhurst Ltd, London, 1895 comprising six dinner forks and twelve dessert/soup spoons 1809 gms

**\$600–800**

**230**

A pair of Georgian Sheffield plate candlesticks  
26cm high

**\$150–250**

**231**

A collection of English and Irish sterling silver, 19th century and later comprising a pair of small dishes, two sets of sugar tongs, nine various spoons, two butter knives and a fork  
total weight 581 gms, the small dishes 12cm diameter

**\$200–300**

**232**

Two sterling silver mounted glass match strikers  
the largest 7cm

**\$100–200**

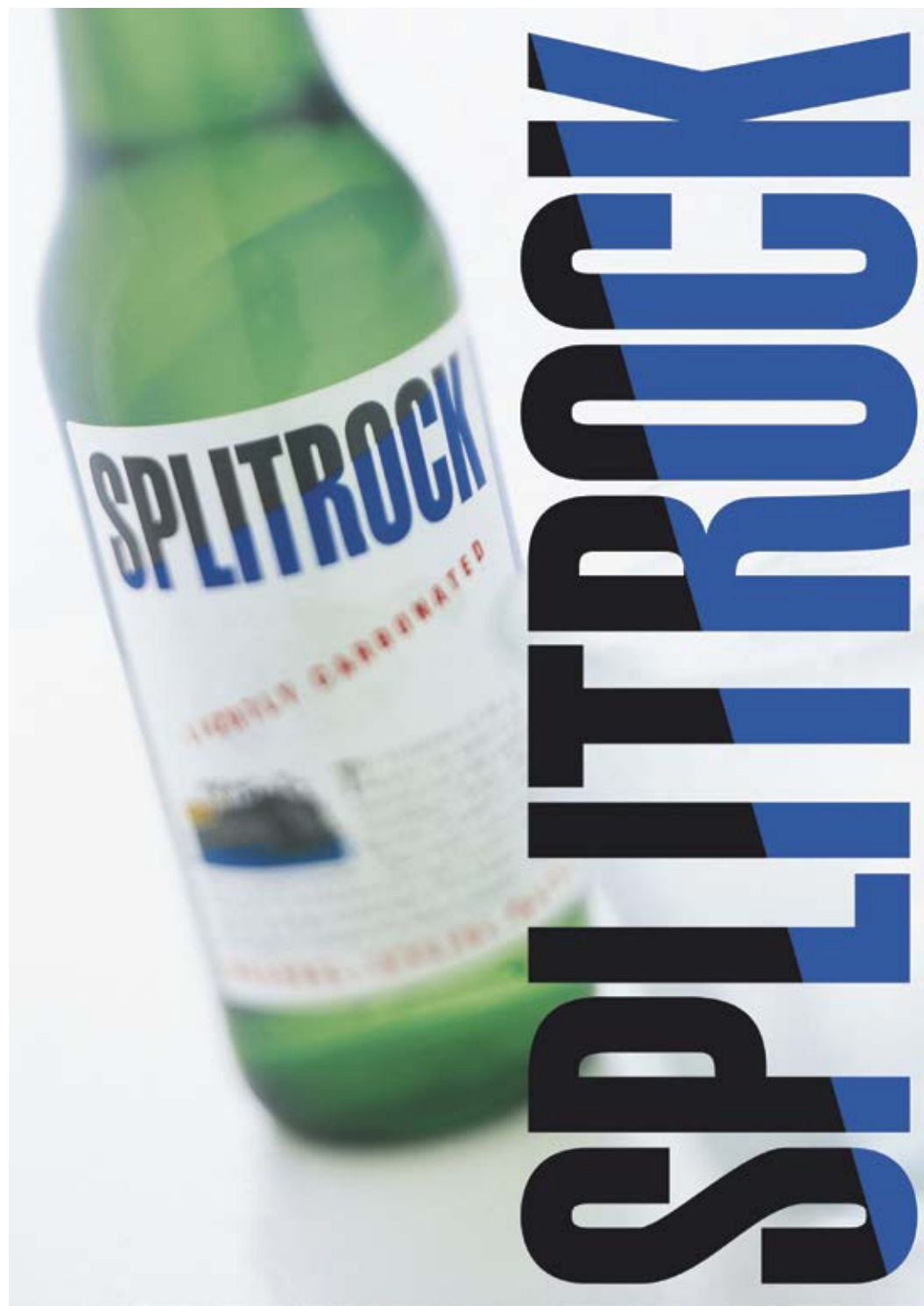


226



227





# The Autumn Auction Series

Decorative Arts & Design  
Chinese & Asian works of art

Melbourne, 1 & 2 April 2019





**Jennifer Gibson**  
 CEO & Head of Valuations  
[Jennifer.Gibson@gibsonsauctions.com.au](mailto:Jennifer.Gibson@gibsonsauctions.com.au)



**Elliott Hughes**  
 Auctions Manager & Specialist  
[Elliott.Hughes@gibsonsauctions.com.au](mailto:Elliott.Hughes@gibsonsauctions.com.au)



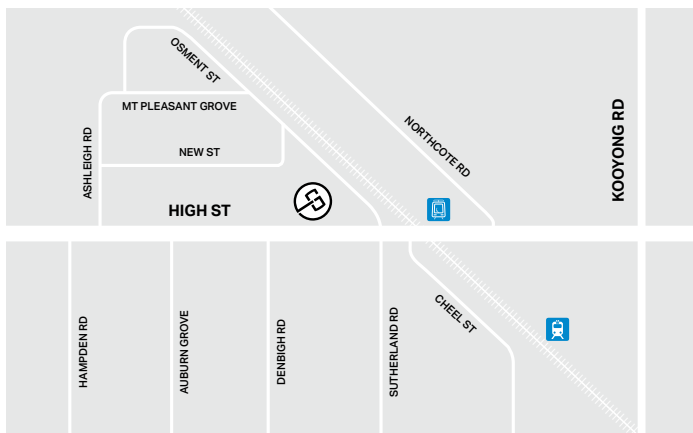
**Elizabeth Stannard**  
 Head of Jewellery  
[Elizabeth.Stannard@gibsonsauctions.com.au](mailto:Elizabeth.Stannard@gibsonsauctions.com.au)



**Simon Gibson**  
 CFO  
[Simon.Gibson@gibsonsauctions.com.au](mailto:Simon.Gibson@gibsonsauctions.com.au)



**Deanna Baxter**  
 Marketing & Client Services  
[Deanna.Baxter@gibsonsauctions.com.au](mailto:Deanna.Baxter@gibsonsauctions.com.au)



**Auction, Viewing and  
 Payment & Collections**  
 Level 1, 885-889 High Street  
 Armadale, Victoria 3143

FRONT COVER:  
Lot 562 (Detail)

BACK COVER:  
Lot 45 (Detail)

# The Autumn Auction Series

## Auction

Session I Monday 1 April 2019, 6.30pm (Lots 1 – 232)  
Session II Tuesday 2 April 2019, 2pm (Lots 233 – 580)  
Session III Tuesday 2 April 2019, 6.30pm (Lots 581 – 776)

Level 1, 885-889 High Street  
Armadale, Victoria 3143

## Viewing

Friday 29 March 10.00–4.00pm  
Saturday 30 March 10.00–4.00pm  
Sunday 31 March 10.00–4.00pm  
Monday 1 April 10.00–2.00pm

Auction Code: **GA005**

## GST

† Lots with this symbol are subject to GST on the hammer price and the buyer's premium.

## Buyer's Premium

Buyer's Premium is charged at 22% of the hammer price plus GST. GST is applicable to the buyer's premium only, unless otherwise indicated by the † symbol.

## Registration

To register to bid at Gibson's Auctioneers & Valuers an accredited form of photo identification is required. This applies to bidding in person at the auction, Telephone, Absentee and Online bidding.

## Resale Royalty Scheme

Lots subject to payment of the Artist's Resale Royalty Scheme will be denoted by the symbol §

The Australian Resale Royalty is a flat rate of 5% on the hammer price (including GST). The Australian Resale Royalty is payable by the seller in addition to the Buyers Premium plus applicable GST.

## Restricted or Organic Material

◆ Lots with this symbol have been identified at the time of cataloguing as containing organic material which may be subject to export or import restrictions. The absence of this symbol is not a guarantee that export or import restrictions will not apply. Please visit [www.cites.org](http://www.cites.org) for further information.

## Payments & Collections

Can be made from:  
Level 1, 885-889 High Street,  
Armadale, Vic 3143

Tue 2 April 9.00–12noon  
Wed 3 April 10.00–4.00pm  
Thu 4 April 10.00–4.00pm  
Fri 5 April 10.00–4.00pm

All goods must be collected and paid in full by 4pm on Friday 5 April (unless by prior arrangement) to avoid removal and storage charges.

All payments are to be made in Australian Dollars (AU\$).

Please refer to the methods of payment in the HOW TO BUY section on the following pages.

Credit card surcharges apply – 1.2% (incl GST) for Visa and Mastercard and 3% (incl GST) for American Express.

# Decorative Arts & Design

Session II – Tuesday 2 April 2019, 2pm

## 233

A Regency ebonised and gilded  
Egyptian revival elbow chair, circa 1820

**\$800–1,200**

## 234

A Chinese export black lacquer  
and gilt decorated dressing table  
mirror, early 19th century  
78cm high, 42cm wide, 30cm deep

**\$700–1,000**



233



234

## 235

An Aubusson floral tapestry,  
19th century  
270 x 174cm

**\$1,000–1,200**

## 236

A Louis XVI marquetry inlaid  
walnut bureau plat with tooled  
leather writing surface  
71cm high, 94cm wide, 47cm deep

**\$1,800–2,200**

## 237

A pair of white painted and parcel  
gilt ecclesiastical torcheres,  
French, 18th century  
91cm high

**\$1,000–1,200**

**238****GASTON D'ILLIERS  
(FRENCH 1876–1932)**

Deux Arabe

bronze

impressed to base: G. d'Illiers

26cm high

**\$1,500–2,500**

238

**239**A Louis XVI style marble top  
ebonised fall front secretaire  
commode, French, 19th century  
85cm high, 124cm wide, 52cm deep**\$3,000–5,000**

239



**240**

A George III satinwood and tulipwood banded bookcase  
221cm high, 134cm wide, 51cm deep  
\$3,000–5,000

**241****ALBERT ERNEST CARRIER-BELLEUSE (1824-1887)**

A greek orator

Bronze, rich brown patination  
signed Par Carrier to the base  
109cm high

**NOTE:**

For a similar example see  
Sotheby's, *19th and 20th Century Sculpture*, London, 20 May 1994,  
lot 18, illustrated on page 18 of the  
catalogue, sold for 3,800 GBP

\$10,000–15,000

**242**

A Regency rosewood folio stand  
110cm high, 114cm wide, 78cm deep  
\$3,000–4,000

**243**

A Spanish elm and wrought iron  
console table, in the 18th century style  
80cm high, 184cm wide, 50cm deep  
\$2,500–3,000

**244**

A pair of Famille Noir style porcelain  
vases, mounted as lamps  
66cm high with shades  
\$3,500–4,500



242



241





245

**245**

A large 19th century carved marble statue of the Venus di Milo, after the antique  
140cm high

**\$6,000–8,000**

**246**

A small Derby porcelain urn  
13.5cm high

**\$100–200**

**247**

A black painted wrought metal and stained glass square hanging lantern, French circa 1900  
72cm high, 30cm wide

**\$700–1,000**

**248**

A very decorative wrought metal and stained glass hexagonal hanging lantern, French circa 1920  
80cm high, 46cm wide

**\$600–800**



246



**249**

A pair of Japanese Fukugawa vases mounted as lamps, late 19th century  
59cm high including the light armature

**\$1,500–2,500**

**250**

A Louis XV style carved giltwood canape, French 19th century  
100cm high, 120cm wide, 80cm deep

**\$500–800**

**251**

A leaded glass and wrought iron hexagonal lantern, French circa 1900  
80cm high, 40cm wide

**\$600–900**

**252**

A gilt metal and glass circular four branch hall lantern, French circa 1950  
72cm high, 35cm diameter

**\$600–800**



249

**253**

Two coloured engravings 'Entrance to Port Phillip' and 'The Victorian Yacht Club taking possession of the ground at Portsea'  
13 x 18cm and 14 x 22cm

**\$200–300**

**254**

A map engraving of Venice  
'La Citta Di Venezia', 1730  
a bird's eye view of the city  
with nineteen numbered sites  
18.5 x 45cm

**\$400–600**



250



255

**255****TAVIK FRANTISEK SIMON  
(CZECH 1877-1942)**

Mi-Careme 1909

etching

signed and dated lower right:

T. F. Simon 09

30 x 30cm

**\$200-300****256**

A Louis XVI gilt bronze mounted

mahogany bureau and tric

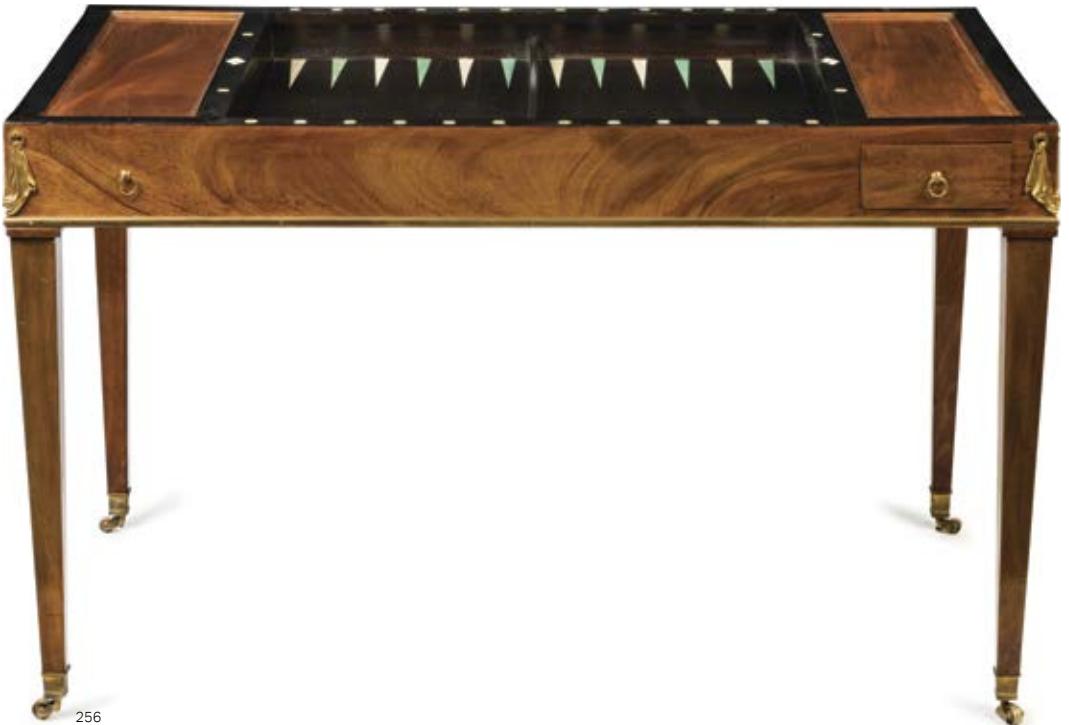
trac table, circa 1800

the removable tooled leather inlaid

top revealing an internal backgammon

board within an ebonised frame

75cm high, 116cm wide, 65.5cm deep

**\$1,800-2,500**

256

**257**

A Regency Grand Tour specimen marble and micro mosaic games table, circa 1820  
63cm high, 43cm diameter

**\$4,000–6,000**

**258**

A gilt-bronze mounted walnut marble top pedestal, French, circa 1840  
107cm high, 40cm diameter

**\$1,000–1,500**

**259**

A carved English oak monk's desk, late 17th/early 18th century  
98cm high, 94cm wide, 60cm deep

**\$400–600**

**260**

A large circular walnut dining table  
76cm high, 200cm diameter

**\$1,800–2,200**

**261**

A George III Sheraton style string inlaid mahogany sideboard, circa 1790 of serpentine form with delicate patera inlay and spade feet  
92cm high, 128cm wide, 60cm deep

**\$2,000–3,000**

**262**

A painted simulated marble Scagliola column, late 19th century  
111cm high, 30cm diameter

**\$1,200–1,500**



263



264

## 263

A George III mahogany fold-over card table, in the Chippendale style, 18th century. The serpentine top above a flower and ribbon carved frieze with pierced and scrolled corner brackets, raised on square tapering linen fold legs. 73cm high, 91cm wide, 45cm deep.

### PROVENANCE

Christie's Melbourne, *Fine Furniture and Decorative Arts*, June 19 - 20, 2000, lot 180A.

### NOTE

Inscribed under the felt baize in pencil "My Own Work / Thomas Chippendale St. Martin's Lane / 1752" and further inscribed with a sketch of two chairs, one with a typical Chippendale back, the other with emphasis on the claw and ball foot.

\$2,500–3,500

## 264

A bottle of Grange Hermitage 1979 BIN 95

\$900–1,200







265

**265**

A pair of French bronze and marble mounted busts of the Apollo Belvedere and the Diana Chasseresse, circa 1880 after the antique  
44cm high

**\$2,000–3,000**

**266**

A Regency mahogany triple-pedestal dining table, circa 1810  
73cm high, 260cm wide, 124cm deep

**\$10,000–15,000**

**267**

A mahogany marble top gilt bronze mounted and marquetry inlaid tall boy, French, 19th century  
128cm high, 63cm wide, 37cm deep

**\$1,000–1,200**



266



268

**268**

A pair of French gilt bronze mounted marble table lamps of baluster form with classical swan neck loop handle mounts and ecru silk shades  
76cm high including the shades

**\$1,800–2,200****269**

A French spelter figurine 'Reine de Pres' after the original by Auguste Moreau (French, 1861–1906)  
65cm high, 20cm diameter

**\$150–250****270**

A Persian Tabriz pattern rug, 20th century  
403 x 300cm

**\$2,800–3,500****271**

A Persian Kashan pattern rug, 20th century  
335 x 245cm

**\$1,800–2,500****272**

A pair of simulated bamboo porcelain stools  
50cm high, 46cm diameter

**\$1,000–1,500****273**

An unusual yellow painted cast iron hallstand, French 19th century  
192cm high

**\$600–800****274**

A large hardwood glazed bookcase, by Kim Moir Bespoke  
282cm high, 264cm wide, 42cm deep

**\$3,000–5,000**

269

**275**

A pair of French Empire bronze and gilt bronze mounted candelabra  
41cm high

**\$1,500–2,000**

**276**

A fine Louis XVI style gilt bronze mounted Calacatta Imperiale marble fire-surround, French, 3rd Republic Period decorated throughout with patera, floral swags and classical motifs the surround 85.5cm high, 144.5cm wide, 39.2cm deep, the fire guard: 61.4cm high, 57.5cm wide

**\$10,000–15,000**

**277**

A Louis XVI style walnut bergere upholstered in ecru and cream

**\$800–1,200**



275



276





**278**

A fine Tekke Turkomen carpet, late 19th century with a different design in each of the end panels  
294 x 208cm

**PROVENANCE**

Mossgreen Auctions,  
*The Jacques Cadry Collection*,  
02 April 2017, Lot 108

**\$8,000–10,000**

**279**

**PLACIDO FRANCES Y PASCUAL  
(SPANISH 1834-1902)**

La Gitana

oil on canvas  
signed lower left: Placido  
Frances / Madrid  
108 x 68cm

**\$600–800**



279

**280**

A pair of Chinoiserie red lacquer side tables by Kim Moir Bespoke  
59cm high, 78cm wide, 47cm deep

**\$2,200–2,600**

**281**

A pair of cast iron urns, 19th century  
107cm high

**\$400–600**



280

**282**

A Japonisme black lacquered and  
gilt decorated secretaire abattant  
on stand, early 20th century  
174cm high, 109cm wide, 46cm deep

**\$3,900–4,200**





283

**283****AFTER CHEN YIFEI**

Lingering Melodies from  
the Xunyang River

oil on canvas

76 x 100cm

**\$4,000–6,000**

**284**

A explosive proof safe manufactured  
by J. L. Kelly, circa 1920

63cm high, 47cm wide, 46cm deep

**\$100–200**

**285**

A Charles II tortoiseshell  
and ebonised mirror  
with a later bevelled edge plate  
107 x 86cm

**NOTE**

In its original form this mirror  
would more than likely have had a  
stumpwork inner slip and a smaller  
plate. For a similar example see  
Bonhams, London, New Bond Street,  
The Provenance Sale, Fine English  
Furniture, Works of Art and Sculpture,  
3 Nov 2010, lot 3

**\$3,500–4,000**

**286**

A large Amphora style ceramic figure  
of a child, late 19th/ early 20th century  
58cm high

**\$200–300**

**287**

A Georgian style brass hanging  
hall light fitted for electricity  
30cm high, 20cm diameter

**\$200–300**



288

**288**

A set of mounted roe deer antlers  
30cm high

**\$100–200 ♦**

**289**

A set of European mounted  
red deer antlers  
64cm high

**\$100–200 ♦**



289



290

**290**

A red deer skull mounted with antlers  
110cm high

**\$200–300 ♦**



291

**291**

A surveyors compass in leather  
carry case N.H SEWARD  
PTY LTD MELBOURNE  
11.5cm diameter

**\$100–200**



293



292

**292**

A George IV rosewood tea caddy  
19cm high, 34cm wide, 17cm deep

**\$500–800**

**293**

A carved alabaster and marble  
figure of 'Rebecca at the Well'  
71cm high

**\$4,000–6,000**

**294**

A Regency style mahogany  
foot stool, 20th century  
studded and upholstered in sienna silk  
45cm high, 52cm wide, 47cm deep

**\$200–300**

**295**

A French wrought metal wine cage  
113cm high, 103cm wide, 58cm deep

**\$600–800**

**296**

A tasselled velvet upholstered ottoman  
42cm high, 82cm wide, 58cm deep

**\$100–200**

**297**

A pair of Regency rosewood Egyptian  
revival side chairs, early 19th century

**\$1,200–1,500**



## 298

A George III satinwood, padouk and inlaid tripod table attributed to John Cobb (d. 1778) the oval tilt-top cross-banded in satinwood and inlaid with a ribbon-tied bouquet of roses, the leaf carved baluster pedestal on three down swept supports with scrolled terminals and block feet 71cm high, 53cm wide, 45.5cm deep

### PROVENANCE

Christie's Melbourne, sale number 101, May 28 - 29, 2001, lot 255.

### NOTE

The history of this elegant tea-table can be linked with the Parisian taste for floral tapestried chairs, with 'Roman' medallion backs, which was popularised at the Gobelins manufactory in the 1750s and rapidly spread to England. Such chairs generally accompanied the magnificent wall tapestries that were woven to the designs of Francois Boucher and celebrated the 'Loves of the Roman Gods' as derived from Ovid's 'Metamorphoses'. A set of these Gobelins tapestries and suites of floral upholstery was ordered in 1766 for Moor Park, Hertfordshire by Sir Lawrence Dunda (d.1781); and the giltwood frames for the seat furniture were executed 1771 by the London cabinet-makers Messrs Lawrence Fell and William Turton. It is likely that this tea-table was also provided for Moor Park. Its golden top displays a trompe l'oeil beribboned bouquet of roses, that are sacred to Venus; and this is inlaid within a 'Roman' medallion frame; while a vase wrapped by Grecian palms is incorporated in the table's 'pillar', which is supported on a tripod 'claw' of serpentine and voluted trusses. In the 1770s the manufacture of such inlaid bouquet medallions 'in remarkable fine coloured woods' was a speciality of the Golden Square firm of Messrs John Mayhew and William Ince. However it is perhaps more likely that this table was supplied by the St Martin's Lane cabinet-maker John Cobb (d.1778), who was noted about 1770 by Sir Lawrence as having supplied him with furniture totalling 'about 1500 pounds'. (G. Beard and C. Gilbert Dictionary of English Furniture Makers, Leeds, 1986 p.927). In 1784 the Moor Park furnishings and furniture were moved to the Dundas London Town House, 19 Arlington Street, and it was here that the table appeared in a photograph taken in 1902 for the magazine *The Kind*, reprinted in *London Interior*, Country Life Arum Press 2000, page 56 & 57

**\$5,000-8,000**





299



300

**299**

A pair of tray-top occasional  
tables by Kim Moir Bespoke  
60cm high, 75cm wide, 50cm deep

**\$400–600**

**300**

A large Italian provincial style  
walnut refectory table  
the central hidden panel with data  
ports to facilitate boardroom use  
67cm high, 450cm wide, 145cm deep

**\$1,500–2,500**



301

**301****ROBERT CHATELOT  
(FRENCH, 20TH CENTURY)**

Quartier du Marais, Paris

oil on canvas  
signed lower left: chatelet  
46 x 60cm**\$400-600****302**A French leather upholstered Art Deco  
armchair attributed to Charles Dudouyt**PROVENANCE**Mossgreen Auctions, *The  
Mark Koronowicz Collection*,  
14 Dec 2016, Lot 33**\$400-600****303**A gilt-bronze mounted mahogany  
serpentine fronted marble top  
commode, Swedish 18th century  
93cm high, 143cm wide, 63cm deep**\$2,500-3,000**

**304**

A pair of William and Mary oak side chairs, Lancashire, circa 1690

**PROVENANCE**

Bonhams, The Oak Interior

**\$2,500–3,000**

**305**

A rare Louis XV serpentine marble and carved console table, French, 18th century  
80cm high  
94cm wide, 46cm deep

**\$2,000–3,000**

**306**

A fine French gilt bronze mounted kingwood and marble top commode, 19th century  
90cm high, 150cm wide, 60cm deep

**\$1,800–2,200**

**307**

A large circular satinwood centre table, English or French circa 1865  
75cm high, 140cm wide,  
95cm deep (oval)

**\$1,800–2,200**

**308**

An ebonised table/desk with red leather top, French, mid 19th century  
75cm high, 100cm wide, 57cm deep

**\$800–1,200**

**309**

A Continental marquetry inlaid walnut circular top occasional table, 19th century  
71cm high, 55cm diameter

**\$300–500**

**310**

A Portuguese Colonial coromandel and bronze mounted bureau, 18th century  
122cm high, 126cm wide, 62cm wide

**\$1,000–1,500**



304







311

### 311

A Bohemian polychrome carved wooden panel of the crucifixion, 17th century  
33cm high, 42cm wide

#### PROVENANCE

Mossgreen Auctions, An Important Private Collection, 14th September 2014, Lot 141 Clive Brans Antiques

**\$800–1,200**

### 312

A polychrome decorated carved oak panel of a huntsman in a landscape, North German 18th century  
27cm high, 37cm wide

**\$600–800**



312

### 313

A polychrome painted and carved wood ship's head in the shape of a maiden, 19th century  
77cm high

**\$800–1,200**



**314**

A pair of 12 inch Terrestrial & Celestial library globes, English, circa 1865 bearing to the cartouche 'Cruchley's late Cary's Terrestrial & and Celestial from the most recent authorities exhibiting the latest discoveries towards the North Pole and the new Settlements & Divisions of Australia, New Zealand, California, Texas & C., London, G.F. Cruchley, Map-Seller, Globe Maker And Publisher 81 fleet street. Additions to January 1st 1864', each supported on a mahogany stand with compass stretcher 86cm high, 45cm diameter

**\$20,000–30,000**





**315**

A pair of George III style wingback arm chairs upholstered in cinnamon brocade

**\$1,000–2,000**

**316**

A rare and finely caved walnut roll top bureau, Alsace Region, French, 18th century

**\$1,500–2,000**

**317**

A fine marquetry inlaid mahogany serpentine fronted two tier cabinet, English circa 1880  
150cm high, 70cm wide, 45cm deep

**\$500–800**

**318****BRUCE FAIRLESS**

Daisies

oil on board

signed lower right: BRUCE FAIRLESS  
19 x 14cm

**\$80–120**

**319**

An Empire style settee  
length of back 217cm

**\$1,600–1,800**

**320**

A Gien 'Oiseaux de Paradis' dinner service, French 20th century  
the tureen 24cm high, 33cm diameter

**\$200–300**

**321**

A large Louis XV style walnut breakfront bookcase  
the upper section with four brass wire front doors above a conforming lower section with solid panelled doors  
247cm high, 265cm wide, 80cm deep

**\$1,800–2,500**

**322**

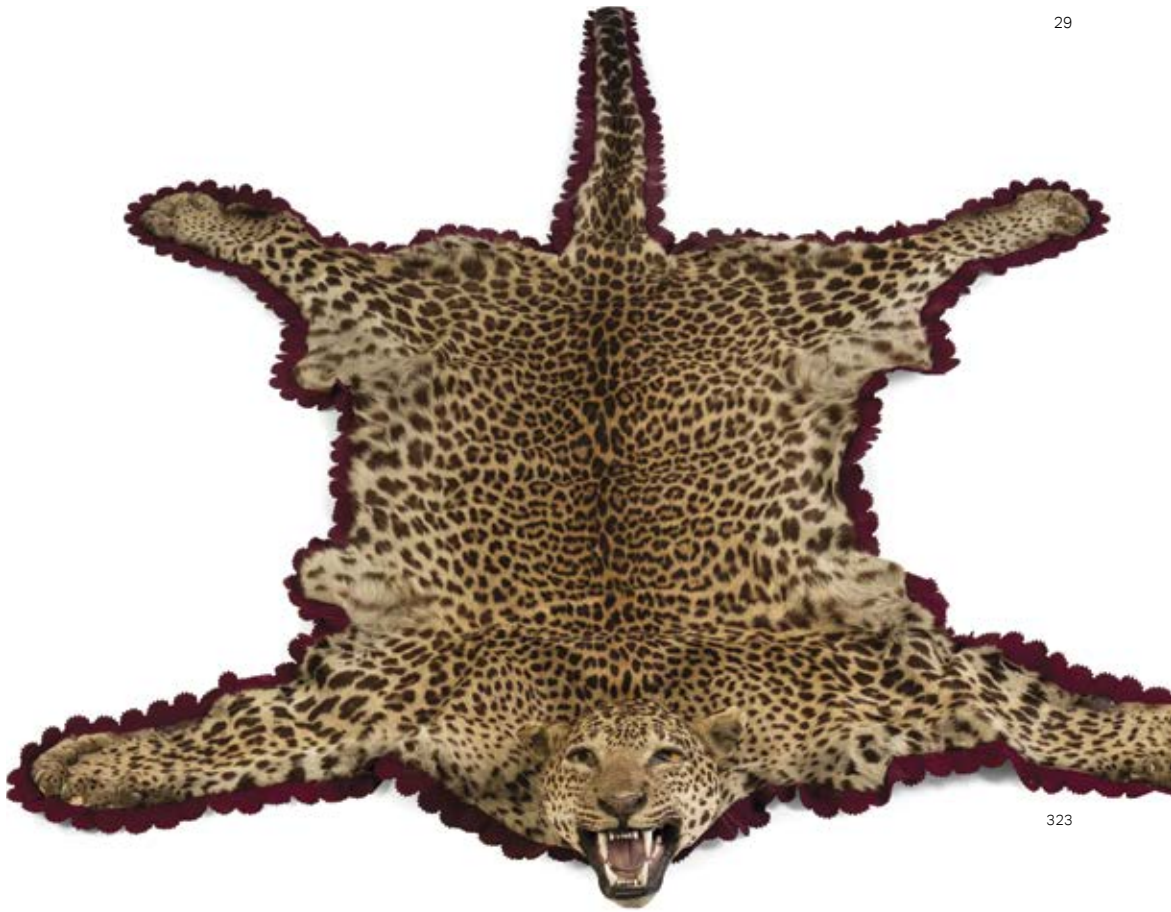
A carved giltwood ceiling light, Italian 19th century  
125cm high

**\$1,200–1,500**



315





323

**323**

A taxidermy *Panthera pardus* (leopard) skin with fully taxidermied head and glass eyes  
179 x 115cm

**\$2,000–3,000 ♦**

**324**

A mahogany pedestal desk with green leather tooled top, English, circa 1850  
78cm high, 132cm wide, 100cm deep

**\$1,000–1,500**

**325**

A Gothic revival carved oak two door cupboard, French 19th century  
184cm high, 124cm wide, 45cm deep

**\$800–1,200**

**326**

A large red painted cast iron lantern bracket in the form of a knight's arm, French 19th century  
90cm high

**\$800–1,200**

**327**

George III mahogany straight front bureau  
100cm high, 92cm wide, 50cm deep

**\$1,200–1,500**

**328**

A fine quality marquetry and walnut bureau display cabinet,  
Dutch, early 19th century  
220cm high, 85cm wide, 50cm deep

**\$1,200–1,500**

**329**

A carved mahogany writing table, French circa 1840  
96cm high

**\$1,000–1,500**

**330**

A marquetry inlaid walnut writing table, Dutch 19th century  
73cm high, 85cm wide, 63cm deep

**\$1,000–1,500**

**331**

A kingwood and ebony veneered and gilt bronze mounted tall boy, French 19th century  
130cm high, 64cm wide, 34cm deep

**\$800–1,200**



332

**332**

A small Parian bust of Apollo,  
late 19th century  
24cm high

**\$100–200**

**333**

A Louis XVI style gilt bronze mounted  
breche d'alep marble top library  
table, French, 19th century  
74cm high, 124cm wide, 69cm deep

**\$4,000–6,000**

**334**

A walnut serpentine fronted  
commode, Italian 18th century  
90cm high, 125cm wide, 63cm deep

**\$1,000–1,500**

**335**

Three upholstered easy chairs,  
Stuart Rattle Design

**\$1,500–2,500**



333

**336**

A Grand Tour bronze model  
of the Capitoline Dying Gaul,  
French, late 19th century  
9cm high, 16cm wide, 7.5cm high

**\$400–600**



336

**337**

A walnut cross-banded chest on stand,  
English early 18th century and later  
153cm high, 100cm wide, 56cm deep

**\$800–1,200**

**338**

A walnut rectangular writing table,  
Continental 18th century  
79cm high, 82cm wide, 52cm deep

**\$800–1,200**

**339**

A satinwood bachelor's chest,  
English, circa 1845  
with finely enamelled handles  
90cm high, 97cm wide, 50cm deep

**\$800–1,200**

**340**

A turned circular top occasional  
table with triangular base,  
Continental 17th/18th century  
74cm high, 74cm wide, 56cm deep

**\$700–1,000**

**341**

A Carrara marble and mahogany  
cabinet, French circa 1850  
100cm high, 63cm wide, 42cm wide

**\$400–600**

**342**

A birdseye maple straight-front  
secretaire chest, Continental circa 1850  
108cm high, 133cm wide, 65cm deep

**\$600–800**



337

**343**

A pair of gilt bronze mounted kingwood bureau plats, French, late 19th century each with black tooled leather writing surfaces  
77cm high, 138cm wide, 76cm deep

**\$18,000–22,000**

**344**

**AGRICAL LOUIS MONTAGNE  
(FRENCH, 1879-1960)**

(Village Scenes at the base of the Alps)

pair of watercolours  
signed lower right: A. L. Montagne  
inscribed verso  
45 x 30cm (each)

**\$600–800**

**345**

A Regency style carved and gilded bedhead by Kim Moir Bespoke  
203cm high, 193cm wide

**\$800–1,200**

**346**

A pair of ebonised hardwood mirrors, by Murdoch & Barclay  
110cm high, 77cm wide

**\$800–1,200**

**347**

A red upholstered wingback chair with matching ottoman, Webster, London  
the ottoman 46cm high, 52cm wide, 52cm deep

**\$300–500**

**348**

A mahogany chiffonier, English mid 19th century  
154cm high, 91cm wide, 42cm deep

**\$200–400**

**349**

A gilt metal barometer clock by J.J. Wainwright & Co. Birmingham  
67cm high

**\$100–200**

**350**

A large oak two tier coffee table, by Kim Moir Bespoke  
45cm high, 110cm wide, 110cm deep

**\$200–300**







344



343



351

**351****ATTRIBUTED ALOIS HEINRICH  
PRIECHENFRIED**

Untitled (Portrait of a Gentleman)

oil on panel

11.5 x 8cm

**\$1,000–2,000****352**A pair of George III Chippendale  
style mahogany side chairs  
with tapestry upholstered drop in seats**\$600–800****353**A porcelain mounted marble top  
thuya-wood occasional table,  
Continental, circa 1900  
75cm high, 35cm diameter**\$1,000–1,500**

352



**354**

An Austrian cold painted bronze figure of an Arab riding a camel mounted on a granite card tray  
19cm high

**\$700–900**



354

**355**

A George III marquetry inlaid mahogany fold over card table  
76cm high, 71cm wide, 70cm deep

**\$2,000–2,500**

**356**

A small Georgian carved oak drop leaf dining table, 17th century  
70cm high, 43cm wide, 107cm deep and 120cm diameter extended

**\$500–800**

**357**

A polychrome decorated carved wood model of a horse's head, French, 19th century  
45cm high

**\$300–500**

**358**

Two carved wood models of eagles, Swiss or German, 19th century  
20cm high, 45cm wide

**\$600–800**

**359**

A pair of gilt-bronze classical figures, Italian, 19th century on green serpentine marble circular bases  
36cm high

**\$800–1,200**

**360**

A gilt-bronze mounted walnut bureau plat, French, circa 1900  
76cm high, 96cm diameter

**\$1,000–1,500**



355

**361**

A Regency coromandel fold over tea table, circa 1820  
75cm high, 97cm wide, 48cm deep

**\$2,000–3,000**

**362**

A nobleman on horseback holding a falcon, India, late eighteenth/early nineteenth century  
opaque water colour on paper  
inscribed in nastaliq script  
front and verso  
33.5 x 22cm

**\$600–800**

**363**

A nobleman wearing a turban, India, late eighteenth/early nineteenth century  
opaque water colour on paper  
inscribed in nastaliq script  
front and verso  
18 x 15cm

**\$600–800**

**364**

A nobleman dressed in white, seated on a chaise, India, late eighteenth/early nineteenth century  
opaque water colour on paper  
inscribed in nastaliq script  
front and verso  
21 x 12cm

**\$600–800**

**365**

A nobleman dressed in green, seated on a chaise, India, late eighteenth/early nineteenth century  
opaque water colour on paper  
inscribed in nastaliq script  
front and verso  
20 x 14cm

**\$600–800**

**366**

A fine gilt bronze mounted kingwood bijouterie table, French 19th century  
69cm high, 66cm wide

**\$600–800**

**367**

A finely carved wood figure of an eagle, Low Countries, 19th century  
46cm high

**\$500–800**

**368**

A large painted terracotta model of a dolphin  
100cm high

**\$400–600**

**369**

Ten modern upholstered dining chairs by Kim Moir Bespoke with slip covers

**\$1,000–1,500**







362



363



364



365





370

**370**

A map of the county of Sussex, 'Suthsexia Vernacule Sussex', 18th/19th century after the original by Joan Blaeu for volume IV of the "Atlas Novus"  
38 x 50cm

**\$300–500****371**

A rare set of fourteen Regency Etruscan revival painted dining chairs, early 19th century

**\$8,000–12,000****372**

A hardwood and ebonised armoire and a pair of matching bedside cabinets by Kim Moir Bespoke the armoire 160cm high, 102cm wide, 61cm deep

**\$1,200–1,500**





373

**373**

A French Empire marquetry inlaid gilt bronze mounted portico clock, late 19th century the movement stamped Leroy, Paris the case stamped Thevenard 55cm high, 29cm wide, 16cm deep

**\$1,800–2,200**

**374**

A French brass foliate decorated marble top console 78cm high, 185cm wide, 59cm deep

**\$2,500–3,000**

**375**

A pair of Empire style table lamps with cream silk shades 97cm high with shade

**\$1,200–1,50**

**376**

A George III style carved giltwood salon mirror 100cm high, 62cm wide

**\$400–600**

**377**

A black slate and marble mantel clock, English 19th century 28cm high, 26cm wide, 15cm deep

**\$300–500**

**378**

A Kashan pattern rug, 20th century 167 x 267cm

**\$400–600**

**379**

A Victorian amber velvet upholstered ladies and gentleman's chair

**\$300–500**



374



**380**

A large and impressive Regency bronze mounted ebonised and giltwood convex girandole, circa 1810 the later plate within a ribbed and beaded reverse-profile frame mounted with orbs, flanked by a pair of scrolling candle-branches with camel head terminals to each side, the feathered apron centred by a coiled serpent, the whole surmounted by a substantial rock form bracket supporting a spread-eagle suspending a ball-and-chain from its beak 150cm high, 100cm wide

**\$10,000–15,000**

**381**

A Grainger's Worcester reticulated and gilded porcelain vase garniture, circa 1880 the vases 13cm high

**\$200–300**



**382**

A Swiss walnut cylinder music box, 19th century playing six airs and tunes  
12cm high, 46cm wide, 17cm deep

**\$500–800**



382

**384**

A blue velvet upholstered ladies chair, English, 19th century

**\$100–200**

**385**

A George II style walnut writing bureau, early 20th century  
102cm high, 77cm wide, 46cm deep

**\$100–200**

**386**

A mahogany jewellery / collectors cabinet, English, 19th century  
35.5cm high, 30cm wide, 25cm deep

**\$150–250**

**387**

A William IV rosewood fold-over card table, English, 19th century  
73cm high, 91cm wide, 45cm deep (closed)

**\$600–800**

**383**

A large and impressive Regency style four pedestal extension dining table and twelve matching chairs, 20th century  
four table leaves  
78cm high, 580cm wide, 138cm deep

**\$1,500–2,000**



383



**388**

A mahogany cylinder top pedestal desk, English 19th century  
the cylinder enclosing satinwood  
drawers and a leather inset writing  
slide, three drawers to each pedestal  
121cm high, 123cm wide, 78cm deep

**\$1,000–1,500**

**389**

A mahogany dressing table  
mirror, English, 19th century  
61cm high, 54cm wide, 26cm deep

**\$50–100**

**390**

A marquetry inlaid burr walnut oval  
centre table, English, 19th century  
74cm high, 121cm wide, 85cm deep

**\$200–300**

**391**

A mother of pearl inlaid papier mache  
occasional chair, English, 19th century

**\$100–200**



388





392

**392**

A pair of spelter urn shaped  
lamps and shades  
50cm high, 15cm diameter

**\$100–200**

**393**

A George III string inlaid flame  
mahogany sofa table  
73cm high, 113cm wide, 64cm deep

**\$1,500–2,500**

**394**

A map of Sussex, 19th century  
drawn by R. Creighton  
engraved by J & C. Walker for  
Lewis' Topographical Dictionary  
19 x 24cm  
together with three hunting maps

**\$50–100**



393

**395**

A large Louis XV style walnut breakfront bookcase the upper section with four brass wire front doors above a conforming lower section with solid panelled doors 247cm high, 265cm wide, 80cm deep

**\$1,800–2,500**

**396**

A Sèvres porcelain 'Napoleon' cabinet plate, 19th century 27cm diameter

**\$100–200**

**397**

A carved laurel leaf decorated giltwood mirror, 19th century 110 x 98cm

**\$400–600**

**398**

A George III oak drop side supper table 71cm high, 157cm wide, 114cm deep

**\$500–800**

**399**

A Rene Lalique "Dinard" frosted and polished glass box and cover, designed in 1927 engraved R. Lalique France to base 8cm high, 13cm wide

**\$200–300**

**400**

A pair of gilt metal ewer form lamps fitted for electricity 77cm high

**\$50–100**





401

**401**

A Regency ormolu mounted brass-inlaid rosewood metamorphic work and games table  
76cm high, 72cm wide, 55cm deep

**\$3,000–5,000**

**402**

A large Schneider cameo glass vase, circa 1925  
mottled orange glass decorated with stylised flowers, raised mark Charder  
41cm high

**\$2,000–3,000**



402

**403**

A French oak bibliotheque, late 19th century  
with wire front doors enclosing shelves  
175cm high, 220cm wide,  
45cm deep approx.

**\$1,500–2,500**

**404**

A rosewood leather inset library table, English, 19th century  
121cm high, 123cm wide, 78cm deep

**\$600–800**

**405**

A George III mahogany Gainsborough chair

**\$2,800–3,500**





**406**

A pair of French Empire style gold-ground baluster vases mounted as lamps, 19th century with winged maiden handles, painted with figural panels, tapered silk shades 67cm high

**\$800–1,200**

**407**

A sienna tasselled silk brocade sofa length of back 210cm

**\$1,500–2,500**

**408**

A French gilt brass mantle clock, 19th century the cylindrical body with applied gothic decoration, supported on four stepped and etched pilasters, with a painted enamel dial and roman numerals, the movement stamped AC&B, Paris, 1046, pendulum and key 40cm high, 24cm wide, 21cm deep

**\$400–600**



406



407



**409**

A large red deer antler chandelier  
145cm high, 95cm diameter  
approximately  
**\$3,900–4,200 ♦**

**410**

A gallery edge lacquer coffee  
table by Kim Moir Bespoke  
50cm high, 140cm wide  
**\$600–800**

**411**

A Regency style Egyptian  
revival painted and gilded carver  
chair, Stuart Rattle Design  
**\$600–800**

**412**

A pair of upholstered roll back easy  
chairs, Stuart Rattle Design  
**\$600–800**

**413****HUGO ERFURTH (1874-1948)**

photograph of Chagall and his wife  
framed with a print of the Chagall  
painting, (Dusk) signed Marc Chagall  
Barry Jones labelled verso dated  
4/May/1964 and inscribed "This  
is to guarantee that the enclosed  
autograph print "Dusk" is a genuine  
Autograph of Marc Chagall (1889- )  
39 x 21.5cm  
**\$300–500**

**414**

A large George III style wire  
front library book case  
240cm high, 360cm wide, 72cm deep  
**\$2,000–3,000**

**415**

A pair of Empire style table  
lamps with cream silk shades  
97cm high with shade  
**\$1,200–1,500**

**416**

A pair of polychrome painted  
dummy boards figures of soldiers,  
French, 18th/19th century  
150cm high  
**\$1,500–2,500**

**417**

A gilt bronze mounted marquetry  
inlaid marble top bombe commode,  
French, 18th century  
stamped to top back left: DELORME  
86.5cm high, 137cm wide, 58cm deep  
**\$8,000–12,000**





418

**418**  
**CLARENCE HENRY ROE (1850-1909)**

Highland Cattle in a Glen

oil on canvas  
 signed lower right: Clarence Roe  
 60 x 90cm

**\$800–1,200**

**419**  
 A set of eight Louis XVI style  
 chairs, 19th century  
 upholstered in red silk

**\$6,000–8,000**

**420**  
 A Regency style brown leather  
 upholstered mahogany chair

**\$100–200**

**421**  
 A George III linen upholstered footstool  
 46cm high, 67cm wide, 44cm deep

**\$100–200**





**422**

A tortoiseshell bracket clock  
by William Osborn, London  
36cm high, 26cm wide, 17cm deep

**\$3,000–4,000**

**423**

A Tibetan wool and linen  
carpet by Behruz Studio  
300 x 370cm

**\$1,000–1,500**

**424**

A Persian hand knotted rug in  
traditional pattern, circa 1920  
333 x 238cm

**\$1,000–1,500**

**425**

A collection of seven daguerreotypes,  
American, mid/late 19th century  
the largest 12cm high,  
10cm wide, 2.5cm deep

**\$300–500**



422



419



426



427

**426**

A bronze wrapped bust of  
Apollo, 19th century  
33cm high

**\$300–500**

**427**

A bronze bust of Diana  
32cm high

**\$600–800**

**428**

**DRAGO MARIN CHERINA  
(CROATIA 1949)**

Sisters 1985

bronze  
signed to base: CHERINA  
26cm high

**\$800–1,200**



428





429

**429**

An unusual grand tour bronze banquet lamp modelled as Silenius and the Serpent, late 19th century with a frosted and etched orb form shade  
61cm high

**\$2,000–3,000****430**

A George I black leather upholstered armchair

**\$3,200–3,500****431**

A Bautou rug, China circa 1920  
168 x 188cm

**\$800–1,200****432**

A collection of approximately fifty plates relating to Exhibitions and Expositions of the 19th century

**\$400–600****433**

A Staffordshire figural group, 19th century  
27cm high

**\$80–120****434**

A collection of twenty-one Sotheby's International, Chinese Works of Art and Painting catalogues

**\$150–250****435**

Hogarth, William (Engraving by Thomas Cook.) The Genuine Graphic Works of William Hogarth, Consisting of One Hundred and Sixty Engravings Faithfully Copied From the Originals Hardcover Publisher: Longman, Hurst, Rees and Orme, London, 1813 Brown paper boards with black title and decoration to cover and on white label to spine.

**\$400–600**

430



436



427



438



439

**436****ROSS WATSON (BORN 1962)**

Untitled (Waiting) 1983

oil on canvas  
signed and dated lower  
right: Ross Watson 83  
90.5 x 121 cm

**PROVENANCE**

Mossgreen, *The Colin Davies  
Collection*, Melbourne 07  
Jun 2017, Lot 19

**\$2,000–4,000 §****437**

A yellow silk brocade upholstered  
Chesterfield sofa with extra  
tassel edge cushions  
260cm length of back

**\$1,500–2,500****438****CHARLES MARION RUSSELL  
(AMERICAN 1865-1926)**

Piegan Squaw Bust

bronze  
inscribed signature, bull skull insignia  
and foundry marks to base: C M  
Russell CAL BR FOUNDRY LA  
17cm high  
together with a accompanying  
volume on the artist

**\$1,500–2,500****439**

A Regency ebonized and parcel  
gilt Egyptian revival armchair, in the  
manner of Thomas Hope, circa 1810  
the curved crest rail finely painted  
with classical motifs and mounted  
with gilt bronze acanthus banding,  
the arms and seat rails decorated  
with carved lion mask terminals

**\$2,000–3,000**



440

**440**

An extensive Copeland Spode powder blue and gilt edge dinner service, circa 1910 - 1940 setting for ten with numerous extra pieces the largest platter 49 x 40cm

**\$1,500-2,500**

**441**

A bohemian blue and white double overlay cut glass gilt decorated scent bottle, circa 1860 with hinged ormolu lid and internal glass stopper 8.5cm long

**\$400-600**

**444**

A baccarat crystal scent bottle, French circa 1850 with embedded decorative ceramic portrait profile of Napoleon engraved silver lid over a ground glass stopper 7.5cm long

**\$300-500**



441

**442**

A Victorian cobalt blue double ended glass scent bottle with embossed silver mounts incorporating a hinged vinaigrette 10cm long

**\$250-350**

**443**

A ruby glass hinged double ended scent bottle of binocular form, circa 1875 with hinged vinaigrette in centre and silver gilt mounts 14cm long

**\$350-400**





**445**

A pair of George III style  
silvered trays on stands  
51cm high, 77cm wide, 52cm deep

**\$2,500–3,500****446****DONALD FRIEND (1914-1989)**

Untitled (Firenze Study) India

ink on paper  
signed, dated and inscribed upper  
right: Donald -49 Firenze  
29.5 x 47.5cm

**\$400–600****447****AFTER CHEN YIFEI**

The Banquet

oil on canvas  
90 x 120cm

**\$1,500–2,500****448****ITALIAN SCHOOL  
(19TH CENTURY)**

Untitled (Portrait of a Noblewoman)

oil on canvas  
90 x 68cm

**\$800–1,200****449****KOEN OKADA (BORN 1919)**

Untitled (Landscape), 1962

oil on canvas  
signed and dated lower right:  
Koen Okada /1962  
40 x 51cm

**\$300–500****450**

A collection of glassware  
including three decanters  
the tallest 8cm high

**\$300–500**





451



452

**451****HAROLD HANSEN GALLIS  
VIKE (1906-1987)**

Untitled (Quarry)

oil on board  
signed lower left: Vike  
60 x 83cm**PROVENANCE**

A Private Collection, Perth

**\$500-800****452**A pair of French bronze campagna  
form urns, 19th century  
each decorated with a frieze of a  
Bacchanalian scene, flanked by  
twin handles with classical mask  
terminals, on a plinth base  
26cm high, 21cm diameter**\$1,500-2,500****453**A Loetz style iridescent glass  
posy vase by Wilhelm Kralik,  
Czech, late 19th century  
with applied green teardrop prunts  
13cm high**\$300-500****454**A pair of green painted cast  
iron urns, 19th century  
on green faux marble pedestals  
48cm high, 70cm across the handles**\$2,500-3,500****455**A pair of large Moroccan  
earthenware pots  
102cm high**\$1,200-1,500**

453



454



456

**456**

A Regency rosewood mother  
of pearl inlaid sewing box  
the interior with fitted mother  
of pearl accoutrements  
20cm high, 33cm wide, 23.5cm deep

**\$500-800**

**457**

A Jolliff blue porcelain jug  
marked Jolliff, FE '32 to base  
12cm high

**\$100-200**

**458**

A large bronze model after Isidore Jules  
Bonheur (1827-1901) of a horse and  
jockey, French, early 20th century  
105cm high, 80cm wide

**\$2,500-3,500**



**459**

Two Derby porcelain putti figures of the seasons, 19th century representing spring and summer  
13cm high

**\$100–200**

**460**

A Samson porcelain figure of a cavalier and a dog, 19th century  
13cm high

**\$100–200**

**461**

An ecru silk upholstered three seater sofa, Stuart Rattle Design  
210cm length of back

**\$1,000–1,500**



459



460



461





462

**462****AFTER GOYA (19TH CENTURY)**

Untitled (Portrait of a Maiden)

oil on canvas

74 x 62cm

**\$500–800****463**A pair of Regency simulated rosewood  
caned side chairs with leather cushions**\$600–800****464**Two antique pocket knives and a  
gold ring, 19th century and later  
comprising an unusual multi-function  
Swiss-army style vintage pocket knife  
with mother-of-pearl mounts; a 9ct  
gold mounted double bladed pocket  
knife and a Victorian 15ct stone set  
ring with garnet and glass doublets**\$100–200**

463



**465****FRENCH SCHOOL  
(19TH CENTURY)**

Untitled (Luxembourg Gardens)

oil on board

18 x 23cm

**\$800–1,200**

465

**466**A George II burl walnut chest of drawers  
95cm high, 95cm wide, 57cm deep**\$1,800–2,200****467**A pair of Mintons Secessionist  
Iris vases, circa 1905  
30cm high**\$400–600****468**A pair of Bretby ware panther figured  
spill vases, early 20th century  
impressed Bretby  
England to base  
19cm high**\$200–300**

466



469

**469**

A Meissen tureen and cover, late 18th century of oval form, the domed cover with a finial shaped as a kneeling putto holding a cornucopia spilling moulded applied fruit and flowers, painted with scattered flowers, blue crossed swords and star mark 18cm high, 21cm wide

**\$400–600****470**

A pair of George III Chippendale style mahogany occasional chairs

**\$800–1,200****471**

A large Minton porcelain umbrella stand with classical Greek decoration 62cm high

**\$1,000–1,200**

470

**472**

A carved ivory figure of  
Christ, 18th century  
25 x 16.5cm

**\$600-800 ♦**

**473**

A George III oak fold over card table  
70cm high, 83cm wide, 86cm deep

**\$1,000-1,500**

**474**

Nineteen volumes of "The  
Magazine of Art" Volumes 1-19

**\$300-500**

**475**

A collection of Exhibition  
and Exposition medals

**\$600-800**

**476**

A collection of material relating to the  
International Exhibition of Philadelphia  
and other American Exhibitions  
including thirty-three tinted lithographs

**\$400-600**



472



473



477

#### 477

A large suite of black and gold speckled Venetian glass stemware and tableware the candlestick 32cm high

**\$600-800**

#### 478

An Arts and Crafts pewter heart shaped butter dish and cover, by William Hutton & Sons, circa 1900 17cm high, 22cm diameter

**\$500-800**



478

#### 479

"Exposition Universelle de 1867 a Paris. Rapports du Jury International" Volumes 1-13 by Chevalier, Michel [Paris 1868]

**\$600-800**

#### 480

A collection of volumes relating mainly to the 1889 and 1900 exhibitions in Paris

**\$300-500**

#### 481

Twenty-nine volumes of the Art Journal. The Art-Union. A monthly journal of Fine Arts edited by Samuel Carter Hall [Hodgeson & Graves, London]

**\$1,000-2,000**

#### 482

Step, Edward Favourite Flowers of Garden and Greenhouse Hardcover Publisher: Frederick Warne & Co. Four Volumes., 1897 8vo. 691pp. Illustrated with three hundred and sixteen coloured plates selected and arranged by D. Bois. Dark green end papers. Bookplate to each volume. Complete set in four volumes, original green art nouveau influenced cloth bindings, gilt, top edge gilt, gilt and dark blue titles and decoration.

**\$500-800**

**483**

Green, Thomas *The Universal Herbal; or, Botanical, Medical, and Agricultural Dictionary*, containing an account of all the known plants in the world, arranged according to the Linnean system. Hardcover. 2 vols. Ud. C 1820. LIVERPOOL. Printed at the Caxton Press by Henry Fisher. Nd. [1816-1820]. thick 4to, 27cm, in 2 volumes, 790 & 885, [1]pp., with 110 hand colour plates, (including in frontis plates and one engraved title). Half Calf over faux morocco

**\$1,500-2,000****484**

Christian, M. *Traite de Mecanique Industrielle*, ou expose de la science de la maecniue deduite de l'experience et de l'observation. Hardcover 1825 Paris, Bachelier. 1825 Two tile pages plus 60 full page steel plates of how 'machines' work. Man-powered and horse-powered. From windmills and water -wheels to pumps and ploughs. Each engraved with diagrammatic details of the machine and how it works. Each page 320 x 265mm. Original cover in brown marbled papers. Gilt title and bands to spine. Marbled endpapers.

**\$300-500****485**

Donovan, E *The Natural History of British Birds*. Hardcover. 1798. Vol V only. London. for the author and F&C Rivington. 1794-1819. Vol 5 only, of ten. Bound in a slightly later brown half calf over marbled boards. Gilt title on black to spine. Spine slightly cracked top and tail. Marbled edges. Bookplate on fep "Maria Elizabeth Finch". The title-page continues...a selection of the most rare and interesting birds which inhabit this country: the descriptions from the *Systema Naturae* of Linnaeus; with general observations, either original or collected from the latest and most esteemed English ornithologists; and embellished with figures, drawn, engraved and coloured from the original specimens

**\$200-300****486**

Beattie, William *SCOTLAND illustrated in a series of views taken expressly for this work by Messrs. T. Allom, W. H. Bartlett, and H. McCulloch*. Hardcover. London, Virtue, 1838. 2 vols. With 2 engr. titles, 118 engr. plates and 1 engr. map. Contemp. maroon half morocco and marbled covers, marbled endpapers. Gilt titles to spines with five raised bands.

**\$300-500****487**

Anon *SMOLLETT* (Tobias George) *A compendium of authentic and entertaining voyages digested in a chronological series the whole exhibiting a clear view of the customs, manners, religion, government, commerce, and natural history of most nations in the known world. Illustrated and ...* Hardcover. Vols I; III; IV; V; VII only. Publisher: Printed for W. Strahan; J. Rivington; W. Johnston; et al. 1766, with the full compliment of 10520 engraved maps by Thomas Jefferys (many folding, some handling tears, many hand tinted), 2 engraved plans, 5 portraits, 12 plates (some folding): Orig. un-renovated brown calf, spines divided into six compartments by raised bands, gilt lettered maroon morocco titles in second.

**\$400-600****488**

Malton, Thomas *A COMPLETE TREATISE On PERSPECTIVE In THEORY And PRACTICE; On the True Principles of Dr. Brook Taylor. Made Clear, in Theory, by Various Moveable Schemes, and Diagrams; and Reduced to Practice, in the Most Familiar and Intelligent Manner* Hardcover. 1776 First Edition Publisher: Printed for the Author, 1776 London: 284pp Folio. 14" x 9-1/8". Frontis, & 48 plates. Thomas Malton was an architectural draughtsman of some repute; known for his accuracy in perspective, young J. M. W. Turner was brought to Malton by his father for lessons on that very subject, and subsequently Turner, in later life, said "My real master was Tom Malton.". This work one of the earliest [if not the earliest] English publications on the subject. Original calf.

**\$600-800****489**

Bartolomé Leonardo De Argensola *Histoire de la conquete des isles Moluques, par les Espagnols, par les Portugais et par les Hollandois* traduite de l'Espagnol d'Argensola et enrichie des figures & cartes géographiques, pour l'intelligence de cet ouvrage Hardcover Publisher: Jacques Desbordes, Amsterdam, 1706 Chez Jacques Desbordes, Amsterdam, 1706. 3 volumes (9 x 16cm) : (I) 405 pp. + 3 pages of catalogue, (II) 402 pp. + 15 fnc (table), (III) 1 fnc (advertisement) + 388 pp. + 10 fnc (table).

**\$500-800****490**

Wedlake, Edward *BRAYLEY History of Surrey* Hardcover *A topographical History of Surrey*. Revised and edited by Edward Walford. With numerous illustrations on steel and wood. In four volumes. Virtue and Co., Ltd., London, [1878-81]. Original highly decorative red cloth; aeg; 4to. A highly attractive set in good condition. All edges gilt, some minor signs of use to covers. Note that the text has been revised for this edition but the plates are unchanged re-issues of those in the 1846 edition.

**\$500-800****491**

Morris Rev. F.O. *A History of British Birds* Hardcover Publisher: Groombridge and Sons, London, circa 1897 8 volumes. 7 1/4" x 5" Stunningly illustrated with 358 wood engraved hand-colored plates. Each plate is protected by a tissue guard. Quarter tan calf over marbled boards with gold letter on red decorated spines with title and volume number in gold letters. Marbled end papers

**\$400-600**





492

**492****ADOLPH JOSEF POHL  
(1872 - 1930)**

Riding Amazon (c.1925)

bronze, dark patina raised  
on a marble base

signed

67cm high

**NOTE**

For a similar example see Fischer  
(Auction), 12 June 2008, Lucerne  
LU, Switzerland, lot number 4140,  
illustrated on page 279 of the  
catalogue, sold for 3,700 EU

**\$3,000–5,000****493**

A three piece modern  
leather lounge suite  
length of back of the settee 216cm

**\$2,000–2,500****494**

A mirrored cocktail cabinet,  
mid 20th century  
200cm high, 70cm wide, 39cm deep

**\$2,500–3,500**

493





495

**495**

A brass with black lacquer fold over console table, Italian circa 1970  
75cm high, 150cm wide, 90cm deep  
**\$800–1,200**

**496**

A Danish Finn Juhl style leather upholstered armchair  
**\$600–800**

**497**

A moulded glass hall table, 20th century  
74cm high, 120cm wide, 40cm deep  
**\$200–300**





498

**498**

Three photographs of the Rolling Stones European tour 1970, 1999 editions  
Keith Richards, Pallis de Sport, 1970, editioned lower left: 2/5;



Keith Richards, Forum, Copenhagen, 1970, editioned lower left: 4/5  
and Keith, Anita & Marlon, Bus to Vienna Airport, 1970, editioned lower left: 255  
dye sublimation prints from originals  
signed and dated lower  
right: Chipmonck 1999



editioned lower left: 2/5  
30 x 20cm

**EXHIBITED**

High Tide and Green Grass, The Continental, 8th March 1999

**\$300–500**



500

**499**

Three photographs of the Rolling Stones European tour 1970, 1999 editions  
 Mick Jagger, Rai Halle, Amsterdam 1970, editioned: 2/5;  
 Lighting Truck #1, Palais de Sport, Lyon 1970, editioned: 2/5  
 and Chipmonck and Charlie Watts, Airport Departure Lounge, Milan 1970, editioned: 3/5  
 dye sublimation prints from originals signed and dated lower right: Chipmonck 1999  
 20 x 30cm

**EXHIBITED**

High Tide and Green Grass, The Continental, 8th March 1999

**\$300–500**

**500**

A pair of three seat leather upholstered button back settees from the Emilio Pucci collection, Swedish, circa 1960  
 length of back 197cm

**\$2,000–3,000**





501

**501****GRANT FEATHERSTON  
(1922-1995)**

R160 Chair, designed c.1951  
manufactured by Kennett Bros. &  
Rayner, emerald green wool upholstery,  
on four timber tapered legs

**\$2,000–2,500****502**

A set of three white moulded fibreglass  
'Ball' chairs by Finn Stone, 20th century  
40cm high, 58cm diameter

**\$300–500****503**

A pair of modern 'Skoop' stools  
by Karim Rashid for Bonaldo  
batch dyed polyethylene  
75cm high, 43cm diameter

**\$400–600****504**

A Equus quagga (zebra) skin rug  
226cm high, 136cm wide

**\$400–600 ♦**





505

**505**

A pair of green wool upholstered 'Numero IV' chairs by Grant Featherstone, 1973

**\$400–600**

**507**

A silvered articulated industrial lamp 75cm high

**\$600–800**

**508**

An unusual etched and cut glass two-tone fan shaped wall mirror, French circa 1930 80cm high, 165cm wide

**\$700–1,000**

**509**

A clear, peach and pale blue coloured glass and giltwood chandelier, French circa 1950 55cm high, 35cm wide

**\$800–1,200**

**510**

A gilt metal and multi coloured glass vine and grape applique ceiling light, French, circa 1950 62cm high approx, 54cm diameter

**\$1,500–2,500**



506



511

**511****PATRICIA PICCININI (BORN 1965)**

SO2 series Social Studies 2000

colour c-print, series of three images  
signed and dated lower right:

Patricia Piccinini 2000

editioned lower left: 21/60  
80 x 80cm**\$1,500–2,500**

512

**512****PATRICIA PICCININI (BORN 1965)**SO2 series 36 Degrees  
on the 14th, 2000digital C-type photograph  
signed and dated lower right,

Patricia Piccinini 2000

editioned 25/60 lower left  
80 x 80cm**\$1,500–2,500**

513

**PATRICIA PICCININI (BORN 1965)**

S02 series Restless 2000

digital C-type photograph  
signed and dated lower right:

Patricia Piccinini 2000

editioned lower left: 25/60

80 x 80cm

**\$1,500–2,500**

513

514

**PATRICIA PICCININI (BORN 1965)**S02 series Last Day of  
the Holidays 2000digital C-type photograph  
signed and dated lower right:

Patricia Piccinini 2000

editioned lower left: 25/60

80 x 80cm

**\$1,500–2,500**

514



515

**515****DEBRA GURNEY (BORN 1959)**

Face Value, 2003

acrylic  
138cm high, 50cm wide, 34cm deep

**PROVENANCE**

Perth Galleries, Perth

**\$2,500–3,500**

**516**

An acrylic and brass glass top  
coffee table, circa 1970  
36cm high, 122cm wide, 77cm deep

**\$300–500**

**517**

A set of four Philippe Starck  
polycarbonate 'Louis' Ghost  
chairs, 20th century  
designed for Kartell

**\$800–1,200**

**518**

A mirrored side table and an unusual  
body form mirror, 20th century  
the side table 76cm high, 71cm wide,  
41cm deep, the mirror 82 x 45cm

**\$300–500**



516



517

**519**

A Kartell thermoplastic and honey comb aluminium orange 'Spoon' trestle desk designed by Antonio Citterio and Toan Nguyen for Kartell  
73cm high, 160cm wide, 80cm deep

**\$400-600**

519





520

**520**

A carved oak fold-out table by  
Osvaldo Borsani, 20th century  
80cm high, 78cm wide, 149cm deep

**\$800–1,200**

**521**

A large circular beech and  
mahogany extension dining  
table, by Kim Moir Bespoke  
77cm high, 380cm wide, 200cm deep

**\$3,000–5,000**

**522**

A spotted leopard skin rug  
with full head mount  
180cm high, 120cm wide

**\$3,000–5,000 ♦**



521



523

**523**

A collection of Arabia porcelain dinner and tea ware the coffee pot 17cm high

**\$400–600**

**524**

A collection of Royal Doulton "Envoy" porcelain, circa 1930 the platter 34cm wide

**\$50–100**

**525**

A large shelly orange and brown dripware jug, circa 1930 marked to base 'Shelley, England' 26cm high

**\$50–100**



**526**

Two Spanish bullfighting posters  
"Plaza de Toros de Salamanca" and  
"Plaza de Toros de Pamplona"  
99 x 48cm and 104 x 49cm

**\$100–200**

**527**

A set of six tan leather upholstered  
beech '330' chairs by Silvio Coppola  
for Bernini, Italian, circa 1969  
each with drop in seats and  
bearing Bernini label

**\$1,200–1,500**

526



527

**528**

A pair of large red and gold four fold  
screens, by Kim Moir Bespoke  
270cm high, 140cm wide

**\$2,000–3,000**

**529**

A silver gilt framed mirror  
162 x 105cm

**\$800–1,000**

**530**

An Art Nouveau carved  
mahogany chair, Italian

**\$200–300**

**531**

A brass and ebony standard  
lamp, Italian, mid 20th century  
with pleated shade  
182cm high

**\$200–300**





532



533

**532**

A French spelter figurine - Lady  
with a Pheasant, circa 1930  
23cm high, 47cm wide, 10cm deep

**\$400-600****533**

An Art Deco bronze figured marble dish  
17cm high, 30cm diameter

**\$400-600****534**

An Ovington New York Legras  
cameo art glass "Rubis Series"  
vase, French circa 1910  
etched to side: Legras and etched to  
base: OVINGTON NEW YORK FRANCE  
43cm high

**\$400-600**

534



**535**

An Arts and Crafts style ebonised display cabinet, 20th century  
198cm high, 80cm wide, 41cm deep

**\$300–500**

**536**

A collection of reference books including architecture

**\$200–300**

**537**

A large silver gilt framed mirror, 20th century  
170 x 104cm

**\$3,500–4,000**

**538**

A yellow embossed cotton upholstered three seater sofa by Kim Moir Bespoke  
250cm length of back

**\$2,000–3,000**

**539**

A red painted side cabinet, Italian  
98cm high, 130cm wide, 35cm deep

**\$200–300**

**540**

A modern rug, Orla Kiely Design, London  
236cm high, 160cm wide

**\$100–200**

**541**

A brass and ceramic standard lamp, Italian circa 1970  
180cm high with shade

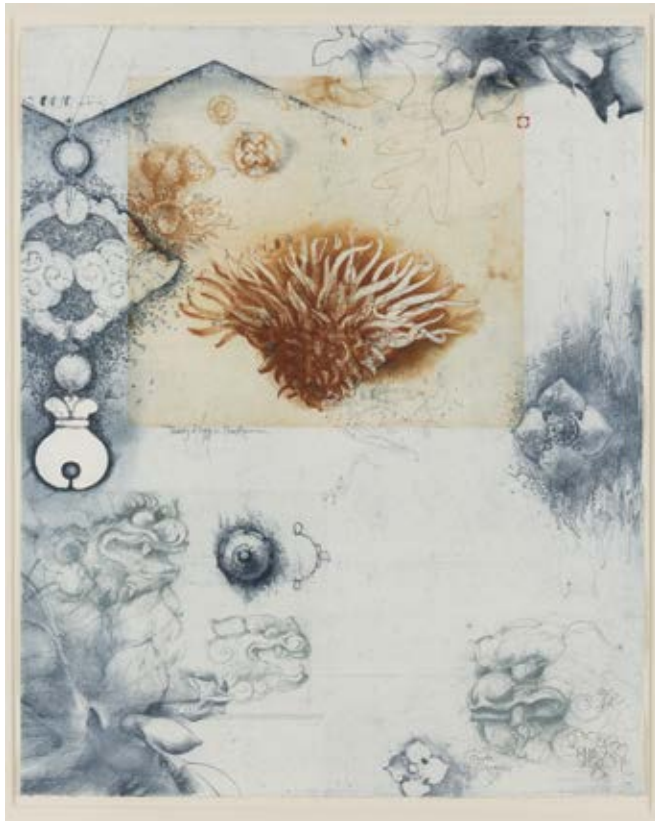
**\$400–600**

**542**

A Kempthorne ceiling light, Australian circa 1970  
70cm high, 50cm diameter

**\$200–300**





543

**543****JORG SCHMEISSER (GERMAN, AUSTRALIAN 1942-2012)**

Thinking of Nara in Princeton 1998

coloured etching

editioned, signed and dated lower

right: 62/80, JORG SCHMEISSER, '98

56 x 45cm

**\$300-500****544**A collection of Australian art  
and artist reference books**\$200-300****545**

A brass and glass bookshelf by

Pierre Vandel, French circa 1970

154cm high, 70cm wide, 30cm deep

**\$500-800****546**

A contemporary wool rug in

tones of green and black

289 x 236cm

**\$400-600**

544

**547****THEODORE TREMBLAY  
(AUSTRALIAN)**Three Major Blessings of  
Victoria Today (Masked) 1980

coloured lithograph

editioned lower left: 2/30 and signed

and dated lower right: Tremblay 1980

32 x 25cm

**\$100–200**

547

**548**A pair of blue velvet lounge  
chairs, Italian circa 1950**\$1,200–1,500**

548



549

**549****NORMANA WIGHT  
(AUSTRALIAN BORN 1936)**

four framed lithographs and  
a print 1981 and later  
the largest 16 x 12cm

**\$200–300****550****JORG SCHMEISSER (GERMAN,  
AUSTRALIAN 1942-2012)**

'Shuttered Window'

coloured etching  
signed and dated lower right:  
JORG SCHMEISSER  
editioned lower left: 30/70  
16 x 18cm

**\$200–300****551**

A large modern gilt framed mirror  
156cm high, 112cm wide

**\$200–300****552**

The Field Exhibition catalogue,  
1968 original catalogue from  
the first temporary exhibition at  
the National Gallery of Victoria  
in August 1968, 96 pages

**\$200–300****553**

Two marble pedestals  
108cm high, 36cm diameter

**\$300–500**

550



554

**554**

**BILL MEYER**  
**(AUSTRALIAN, BORN 1942)**

Green Crossing with Lines 1980  
 stencil print editioned lower left: 7/22  
 and signed lower right: Bill Meyer  
 56 x 76cm

**\$100–200**

**555**

A pair of green and gilt decorated velvet  
 upholstered beech stools, 20th century  
 45cm high, 50cm wide, 35cm deep

**\$600–800**

**556**

An acrylic and brass glass top  
 console table, circa 1970  
 78cm high, 153cm wide, 45cm deep

**\$500–800**



555





557

## Property from a Private Collection Melbourne

**557**

**FREDERICK GEORGE REYNOLDS  
(ENGLISH, 1828-1921)**

Near Tunbridge Wells, England

watercolour

signed with monogram lower right

28.5 x 23.5cm

**\$200-300**

**558**

A pair of Victorian burr walnut  
serpentine fold-over card tables  
75cm high, 95cm wide, 49cm deep

**\$1,200-1,500**

**559**

A small marquetry inlaid gallery  
edged tray, 20th century  
6cm high, 40cm wide

**\$100-200**



558



**560**

A large Victorian marquetry inlaid  
burr walnut circular dining table  
74cm high, 134cm diameter

**\$800–1,200**

560



561

**561**

A French bronze-mounted Boulle tortoiseshell striking eight day mantel clock, Balthazar, Paris, 19th century with elaborate brass strap-work, the top surmounted by a figure of an angel, the gilded dial with applied enamel Roman numerals, the centre cast with a sunburst and scrollwork, with pendulum, winder and case key, the dial inscribed Balthazar a Paris 96cm high, 53cm wide, 22cm deep

**\$2,000–3,000 ♦**

**562**

A fine gilt brass inlaid Boulle cabinet, 19th century 122cm high, 90cm wide, 38cm deep

**\$1,800–2,500**



562



**563**

A Louis XV style gilt bronze mounted vitrine, late 19th century  
182cm high, 65cm wide, 43cm deep

**\$1,500–3,000**

**564**

A collection of assorted references and catalogues on carpets and rugs

**\$100–200**

**565**

A collection of assorted reference books, texts and catalogues on silver, jewellery and timepieces

**\$200–300**

**566**

A collection of assorted references and catalogues on Australian and International Art

**\$100–200**

**567**

A collection Sotheby's Parke Bernet catalogues from the Collection of Mentmore comprising volumes I – V, Vol I Furniture, Vol II Works of Art and Silver, Vol III Porcelain, Vol IV Paintings, Prints & Drawings and Vol V General Contents of the House

**\$100–200**

**568**

A small miscellaneous collection of books and catalogues

**\$100–200**

**569**

A large collection of embroidered linen

**\$100–200**

**570**

Two small carved giltwood picture frames, 19th century  
the rectangular frame,  
18cm high, 15cm wide,  
the oval frame 29cm high, 20cm wide

**\$100–200**



**571**

A Louis XV style gilt bronze mounted kingwood bureau plat, French, 19th century  
75cm high, 150cm wide, 78cm deep  
**\$2,500–3,500**

**572**

A set of twelve studded velvet upholstered mahogany dining chairs, English, 19th century  
**\$1,800–2,500**

**573**

A pair of George III style mahogany side chairs, 19th century  
**\$400–600**

**574**

A large Bohemia crystal comport punch bowl  
24cm high, 30cm diameter  
**\$50–100**

**575**

A Limoges porcelain dessert service, late 19th century setting for twelve with a comport, two bowls and two oval dishes the comport 10cm high, 23cm diameter  
**\$200–300**

**576**

A pair of white porcelain bird figured lamps  
60cm high  
**\$100–200**

**577**

A large collection of assorted Decorative Arts, Art, Furniture and Ceramics catalogues  
**\$100–200**

**578**

A set of six Victorian walnut dining chairs  
**\$600–800**

**579**

A pair of Louis XV style walnut armchairs, late 19th century  
**\$800–1,200**





**580**

A Louis XV style gilt bronze mounted  
vitrine, late 19th century  
decorated with bucolic scenes  
208cm high, 113cm wide, 40cm deep  
**\$2,000–3,000**



# Chinese & Asian works of art

## Property from a Private Collection Melbourne

Session III – Tuesday 2 April 2019, 6.30pm

### 581

A pair of Chinese blue and white saucer dishes, Qing Dynasty, Kangxi Period (1662-1722) each painted to the interior with a scene of a couple in a pavilion garden within a flower and diaper border around a serpentine cavetto, the base with apocryphal Chenghua mark; together with an 18th century saucer dish bearing a Yongzheng mark 15.5cm diameter

清 康熙 藍白盤一對

**\$600–800**

### 582

Two Chinese blue and white dishes, Qing Dynasty, Kangxi Period (1662-1722)

one dish decorated with panels of flowers within diaper borders, the second deeper dish decorated with fish and sea creatures the largest 23.5cm diameter

清 康熙 青花紋瓷碗一對

**\$400–600**

### 583

A Chinese blue and white jar and two blue and white vases, Qing Dynasty, 18th century and later each decorated in under glazed blue with landscape scenes and flowers the tallest vase 20cm high

清 青花瓶一對與瓷罐一只

**\$600–800**

### 584

A small collection of Kutani porcelain, late 19th century the largest pair of vases 25cm high

**\$400–600**

### 585

Two Japanese carved wooden figures, late 19th/early 20th century tallest 33.5cm high 十九世紀晚期或二十世紀早期 日式木雕一對

**\$400–600**

### 586

A Chinese blue and white porcelain ginger jar, 19th century with blossom decoration and a pierced wooden cover 21cm high

十九世紀 青花紋瓷罐

**\$200–300**

### 587

A Chinese cloisonné dragon vase, 19th century 23cm high

十九世紀 景泰藍龍紋瓶

**\$400–600**

### 588

A large Chinese Sang de Boeuf vase on stand, late 19th century 36cm high

十九世紀晚期 紅釉瓶含底座

**\$800–1,200**





582



583



589

**589**

A Chinese blue and white bowl, Qing Dynasty, Kangxi Period (1662 - 1722) decorated with a continuous scene of figures and animals within diaper borders, the interior decorated with a writhing dragon  
清 康熙 青花色碗

**\$400-600****590**

A pair of Chinese blue and white jars, Qing Dynasty, Kangxi Period together with another 18th century blue and white jar decorated with Lingzhi  
13.5cm high  
tallest 清 康熙 青花罐一對

**\$600-800****591**

Three Chinese blue and white vases, Qing Dynasty (1644-1912) variously decorated with landscape scenes, figures and birds flying amongst foliage  
21cm high

清 青花瓷瓶 三件

**\$400-600****592**

A Chinese carved jade yen-yen vase and a leaf form dish  
the vase 19cm high

十九世紀 翡翠鳳尾瓶

**\$100-200****593**

Two Chinese carved lapis lazuli figures, Republic Period  
the largest 7.5cm high  
民國時期 青金石雕一對

**\$200-300****594**

A Chinese blue and white Yen yen vase, 20th century  
50cm high, 27cm diameter  
二十世紀 青花鳳尾瓶

**\$500-800****595**

A collection of seven Chinese blue and white, polychrome and crackle glaze vases, 19th century and later  
the tallest vase 13.5cm high  
十九世紀晚期 藍白, 多色  
和裂紋釉花瓶 七件

**\$300-500****596**

A collection of six Chinese monochrome porcelain vessels and a stem cup, 19th century and later  
the largest vessel 11.5cm high  
and stem cup 9cm high  
十九世紀晚期 單色釉罐  
六件 與高足杯一件

**\$300-400**





590



591





597



598



599

**597**

A Chinese Sang de Bouef vase and brush pot, 18/19th century  
the vase 15cm high  
十八/ 十九世紀 紅釉瓶與筆洗

**\$400-600**

**598**

A Chinese Sang de Bouef flambe Meiping vase, Qing Dynasty (1644-1912)  
20cm high  
清 紅釉梅瓶

**\$500-800**

**599**

A Chinese yellow ground 'floral' famille rose bowl, Jiaqing seal mark and probably of the period  
the exterior vibrantly enamelled in the Imperial style with scrolling flowers including lily and chrysanthemum all reserved on a yellow ground, the interior with five bats in iron red  
6cm high, 15cm diameter

**NOTE**

For a similar example see Bonhams Knightsbridge, Asian Art, November 5, 2018, lot 185, sold for AUD \$197,000.  
清 嘉慶年款 黃地粉彩碗

註: 此件藝品應來自嘉慶年間, 相似拍品請見2018年Bonhams Knightsbridge亞洲藝品拍賣, 結標價 AUD\$197,000

**\$500-800**

**600**

A large Chinese Sang de Boeuf vase on stand, late 19th century  
57cm high 十九世紀 紅釉瓶

**\$1,000–1,500**

**601**

A Chinese Sang de Boeuf bottle vase, probably 19th century  
42cm high, 17cm wide  
約十九世紀 紅釉瓶

**\$1,000–1,500**

**602**

A pair of Chinese Hongmu side chairs, 20th century  
二十世紀 紅木椅一對

**\$400–600**

**603**

A small Chinese carved and gilded table cabinet/shrine, late 19th/early 20th century  
34cm high, 25.5cm wide, 25.5cm deep  
十九世紀晚期/二十世紀早期 小型木製鍍金桌櫃

**\$500–700**

**604**

A collection of ten Chinese carved bone and ivory snuff bottles, Republic Period (1912–1949) together with two small ivory figures the largest 10cm high  
民國時期 象牙與骨雕鼻煙壺 十件

**\$500–800 ♦**

**605**

A pair of Chinese rosewood glazed display cases, 20th century  
70cm high, 46cm wide, 12cm deep (each)  
二十世紀 花梨木櫃一對

**\$400–600**

**606**

A collection of seven various snuff bottles, 19th century and later including jade, shagreen, rose quartz and agate the tallest 8cm high  
十九世紀晚期 鼻煙壺 七件

**\$300–500**



600



601



607



608

**607**

Two Chinese polychrome painted porcelain panels, Republic Period (1912-1949) framed 42 x 24.5cm and 36 x 25cm  
民國時期 人物畫瓷版一對

**\$800-1,200**

**608**

Two Chinese polychrome decorated table screens, Republic Period (1912-1949) the vertical panel 19cm high, 12cm wide, the horizontal panel 14cm high, 25cm wide  
民國時期 風景屏風一對

**\$400-600**

**609**

A large Chinese famille vert floor vase on stand, possibly late 19th century 60cm high, 21cm diameter  
約十九世紀晚期 大型粉彩瓶

**\$1,500-2,000**

**610**

A small Chinese silver vase, early 20th century with all over embossed decoration of a flowering prunus 6.5cm high  
二十世紀早期 小型銀瓶

**\$100-200**

**611**

A Chinese yellow glazed porcelain vase, 20th century 38cm high, 22cm wide  
二十世紀 黃釉瓷瓶

**\$600-800**

**612**

A Chinese sang de boeuf bottle vase, late Qing Dynasty 27.5cm high  
晚清 紅釉瓶

**\$400-600**

**613**

A small collection of Chinese lacquer comprising two red lacquer boxes and two carved tassels the largest box 14cm high, 6cm wide, 10cm deep

**\$50-100**

**614**

A Chinese carved rock crystal figure and two resin figures, Republic Period (1912-1949) the largest 14cm high  
民國 人像三件

**\$200-300**

**615**

A set of three Chinese carved and gilded wall panels the tallest 39cm high  
木製鍍金壁飾一對

**\$200-300**





616



617



618

**616**

A Chinese blanc de chine lotus form bowl, late Qing Dynasty  
27cm high, 21cm diameter  
晚清 德化白瓷蓮花碗

**\$300-500****617**

A Chinese cafe au lait medallion bowl, Chien Lung mark and period  
the exterior decorated with roundels of flowers within gilded borders on rich cafe au lait ground  
8.5cm high, 19cm diameter  
二十世紀 花卉瓷碗

**\$400-600****618**

A collection of Chinese famille rose porcelain, 18th century and later  
comprising a tall, pierced vase, a covered jar, a pair of saucer dishes, a single saucer dish and a cafe au lait cup  
the vase 29cm high  
十八世紀晚期 粉彩瓷 六件

**\$400-600**



**619**

A Chinese flambe enamelled vase, possibly 19th century decorated with the figure of seated elder, the neck with applied lug handles, the vase accompanied with a black and white photograph inscribed Chien Lung, purchased Canton Fair - China, 1970  
30cm high, 19cm wide  
約十九世紀 銅紅釉琺瑯花瓶

**\$600-800**

**620**

A Japanese bronze figure of a scholar and a duck, 19th century  
37cm high, 19cm wide, 18cm diameter  
十九世紀 日本銅像

**\$1,000-1,500**

**621**

A Chinese shagreen stem cup travelling case  
15cm high, 7cm diameter  
鯪魚皮箱一只 用於收納瓷碗

**\$100-200**

**622**

A pair of Chinese green glazed vases, 20th century  
30cm high  
二十世紀 綠玻璃瓶

**\$80-100**

**623**

A Chinese powder blue baluster form vase, 20th century  
23cm high  
二十世紀 粉藍 欄杆型花瓶

**\$100-200**

**624**

A Kayseri 'art silk' rug, central Anatolia, early 20th century  
Cotton foundation, mercerised cotton knotted pile  
85 x 55cm

**\$100-150**

**625**

A Sarouk-Fereghan rug, west central Iran, early 20th century  
wool foundation, knotted wool pile  
192 x 135cm

**\$2,000-3,000**

**626**

A Chinese white porcelain censer and a libation cup, 18th century  
the censer 12.5cm diameter, the libation cup 7.5cm high

**NOTE**

the censer accompanied by a small card inscribed "Porcelain incense burner from the Te-hua kilns (Fukien) 17th or 18th century. It is quite usual for Te-hua pieces to be inscribed but this particular inscription is not recorded. Painted in the Hsiang Ching Ch'un Pavillion (fragrant pure spring)"  
十八世紀 白瓷香爐與酒杯

**\$400-600**



619



620



627

**627**

A Chinese carved ivory teapot and a cribbage board, late 19th century the teapot 14cm high, the cribbage board 24cm high, 8cm wide

十九世紀晚期 象牙雕刻茶壺與克里比奇遊戲版

\$300-500 ◆

**628**

A Doucai cup, Cheng Hua mark, Yung Cheng period delicately decorated with a continuous frieze of bamboo branches and leaves 3cm high, 6.5cm diameter

清 雍正 鬥彩杯

\$600-800



628

**629**

A Qingbai moulded conical bowl and a petal lobed bowl, 12th/13th century the bowl decorated to the centre with a peony spray the conical bowl 18.5cm diameter, the lobed bowl 12.5cm diameter

宋代 青白瓷碗 與 牡丹花碗

\$600-800

**630**

Two Chinese white porcelain reticulated cups and a covered dish, 18th century the largest cup 8.5cm diameter and the covered dish 10.5cm diameter

\$300-500



629

**631**

Two Chinese Blanc de Chine  
figures, late 18th/19th century  
the largest 10cm high 十八世  
紀晚期 單色釉人偶一對

**\$300-500**

**632**

Three Chinese blanc de chine  
figures, late Qing Dynasty  
comprising a standing Guanyin,  
a seated Guanyin and a Buddhist  
lion the standing Guanyin  
24cm high  
晚清 德化白瓷人物像三件

**\$300-500**

**633**

Five Chinese carved lacquer and  
cinnabar lacquer snuff bottles,  
19th century and later  
tallest 9.5cm high  
十九世紀晚期 鼻煙壺 五件

**\$300-500**



631



632



634

**634**

A Chinese carved jade finial, late Ming Dynasty (1368-1644) finely pierced and carved with a reticulated design of cranes, foliage and lotus  
5cm high, 4cm wide, 3.5cm deep  
明代晚期 玉雕

**\$500-800**

635

**635**

A jade carving of two cats, late Qing Dynasty (1644 - 1912)  
4.5cm

晚清 貓玉雕

**\$400-600**

636

**636**

Two Chinese carved jades and a small carved box, 19th century each carved in the form of a leafy peach, the box with a peach motif to the cover the largest 5.5cm

十九世紀 玉雕兩件與盒

**\$200-300****637**

Three Chinese carved jade gourds and a carved jade hairpin, 19th century and later together with a small carved jade ornament

the largest gourd 6cm long

十九世紀晚期 玉葫蘆三件 玉雕髮飾一件

**\$300-500****638**

Three jade bi discs and a small archaistic jade ewer, late Qing Dynasty comprising two finger citrons and three peaches

the largest disc 8cm diameter, the ewer 3.5cm high

晚清 玉碟 三件 與小玉壺一件

**\$300-500****639**

Two Chinese carved jade pendants one with an 18ct gold mount carved as a peach and a buddha's hand, the other carved as a cicada

the largest 7.5cm

玉雕墜飾 兩件

**\$300-500****640**

Two Chinese carved jade vessels, late Qing Dynasty comprising a brushwasher carved in the form of a peach and a carved celadon jade in the form of a 'Buddha's hand' finger citron

9.5cm high

晚清 玉雕器皿一對

**\$300-500****641**

Five Chinese jade carvings, 19th century and later comprising three carved as leafy peaches and two carved as finger citrons

the largest 6cm high approx

十九世紀或更晚 五件玉雕刻

**\$200-300**

637



638



639



640



641





642

**642**

A framed Chinese silk embroidery panel, 19th century  
45 x 70cm  
十九世紀 裱框絲綢刺繡畫

**\$200–300****643**

A collection of five Japanese woodblock prints, 19th century and later  
the largest 34 x 24cm  
十九世紀晚期 木版畫五件

**\$100–200**

643

**644**

A Sarouk silk rug, west central Iran, early 20th century  
silk foundation, knotted silk pile  
200 x 126cm

**\$2,500–3,500****645**

Three Japanese gold-lacquer hair ornaments, 19th century and later  
comprising two hair sticks and a comb the largest hair stick 15cm  
十九世紀晚期 金漆髮飾三件

**\$100–200****646**

A Chinese bronze mirror, a small bronze figure and a spinach jade bowl, 19th century and later  
together with a small Japanese gilded metal box and a Bizenware ceramic figure of a deity  
the mirror 20cm diameter,  
the bowl 14cm diameter  
十九世紀晚期 銅鏡、銅像與碧玉碗

**\$100–200****647**

A collection of ten blue and white vases, cups and dishes, Qing Dynasty, Kangxi Period (1662-1722) and later  
comprising two pairs of saucer dishes, three cups, two vases and a bowl  
the tallest vase 13.5cm high, the largest dish 12.5cm diameter  
清 康熙 青花容器 十件

**\$400–600****648**

A Chinese carved rosewood side cabinet, 20th century  
84cm high, 118cm wide, 41cm deep  
二十世紀 花梨木邊桌

**\$400–500**



649

**649**

A large Japanese woodblock print, 19th century together with five various smaller Japanese framed woodblocks and prints and a painting by Lin Bojun the largest 35 x 73cm

十九世紀 大型日式木板畫

\$100-200

**650**

A collection of ten Chinese blanc de chine and white porcelain vases, vessels and a large dish, 18th century and later the largest vase 19cm high, the dish 23cm diameter

約十八世紀晚期 白瓷瓶與盤套組十件

\$200-400

**651**

Three Japanese netsuke, 19th century together with a small carved Indian figure modelled as a horse and rider the largest 6cm high

十九世紀 日本精雕三件

\$200-300

**652**

A Chinese Sang de Boeuf ginger jar and cover, late Qing Dynasty  
22cm high  
晚清 紅釉薑花罐

**\$200-400****653**

A large collection of various Chinese and Asian Art reference books texts  
中國與亞洲藝品參考書合集

**\$200-300****654**

A collection of eight Chinese carved hardstone animals, 19th century and later  
the largest 5.5cm high  
十九世紀晚期 動物石雕 八件

**\$200-300****655**

A Chinese carved hardstone brush rest, Republic Period (1912-1949)  
6cm high, 12cm wide  
民國 石雕筆座

**\$200-300****656**

A Chinese carved jade buckle and two plaques, Republic Period (1912-1949)  
the buckle 12cm long  
民國 玉扣與玉牌 三件

**\$300-500****657**

A Chinese soapstone boulder carving, Republic Period (1912-1949)  
9cm high, 14cm wide  
民國 滑石雕

**\$200-300****658**

Four jade carvings of figures, late Qing Dynasty  
comprising three celadon jade figures and spinach jade figure of a standing Guanyin  
the largest 7.5cm  
晚清 玉雕人像四件

**\$200-300****659**

Four jade carvings of figures, late Qing Dynasty  
the largest 7.5cm  
晚清 玉雕人像四件

**\$200-300****660**

Three reticulated jade plaques, late Qing Dynasty  
the largest 7.2cm high, 8cm wide  
晚清 鏤空玉雕 三件

**\$200-300****661**

Three Japanese lacquer five-case inro, 19th century and later  
the largest 8cm high  
十九世紀晚期 印籠 三件

**\$300-500****662**

Two Japanese gold-lacquer inro, Meiji Period  
comprising a six-case inro with an attached netsuke and a five-case inro  
the largest 9cm high  
明治時代 金漆印籠兩件

**\$300-500****663**

A collection of eleven blue and white cups and bowls, 18th century and later  
the largest cup 7.5cm high  
十八世紀晚期 藍白杯碗七件

**\$200-400****664**

A pair of Chinese carved rosewood barrel stools, 20th century  
46cm high, 30cm diameter (each)  
二十世紀 花梨木雕凳一對

**\$400-600****665**

A Chinese carved camphor wood chest, circa 1940  
49cm high, 97cm wide, 48cm deep 1940  
樟木箱

**\$50-100****666**

A collection seven Chinese blue and white vases and vessels, 19th century and later  
comprising three vases, a small bowl with iron red highlights, a small stemmed cup, a beaker and a shallow bowl mark for Guangxu  
the tallest 13cm high  
十九世紀晚期 藍白瓶, 碗與杯 共七件

**\$300-500****667**

A collection of six Chinese blue and white vases, 18th century and later  
variously decorated with figures and flowers and foliate motifs;  
one soft paste porcelain vase  
the tallest 12.5cm high  
十八世紀晚期 藍白瓶七件

**\$400-600****668**

Two Chinese blue and white vases, Qing Dynasty, Kangxi Period (1662-1722)  
each decorated with panels of flowers and foliage within diaper borders  
the tallest 18cm high  
清 康熙 青花瓶一對

**\$600-800****669**

A Chinese blue and white kendi, Ming Dynasty, Wanli Period (1573-1620)  
decorated with scenes of figures and landscapes  
19cm high  
明 萬曆 青花壺

**\$500-700****670**

Two Chinese blue and white dishes, Ming Dynasty, Wanli Period (1573-1620)  
each decorated with panels of birds, flowers and symbols the largest dish 15cm diameter  
明 萬曆 青花花鳥盤一對

**\$400-600**



**671**

A large Sarouk carpet, west-  
central Iran, early 20th century  
cotton foundation, knotted wool pile  
600 x 362cm

**\$7,000–10,000**





672

**672**

A Chinese hardwood display cabinet the glazed rectangular display section raised on a pierced and carved stand finely decorated with carved prunus boughs 98cm high, 74cm wide, 43cm deep

**\$1,200–1,500****673**

A Chinese porcelain lamp 58cm high without shade

**\$100–200****674**

Two Chinese carved hardstone figures and a covered urn the urn 18cm high

人物石雕兩件與甕 (有蓋) 一件

**\$100–200****675**

Two Chinese carved ivory snuff bottles, late 19th century the tallest 8cm high

十九世紀晚期 象牙雕刻鼻煙壺一對

**\$300–500 ♦****676**

Four Japanese deer antler netsuke, 19th century the largest 10cm high

十九世紀 日本鹿角精雕四件

**\$200–300 ♦****677**

Four Japanese netsuke, 19th century the largest 5cm

十九世紀 日本精雕四件

**\$200–300****678**

A pair of Chinese miniature wood framed calligraphy panels, 19th century together with a small seal and a miniature inro each panel 7 x 5cm

十九世紀 小型書法對聯

**\$200–300****679**

Three pieces of Chinese blue and white porcelain, 20th century comprising a dish, a two-handled censer and a small jar the dish 18.5cm diameter, the jar 8cm high

二十世紀 青花瓷盤, 香爐與瓷罐 共三件

**\$300–500****680**

A Chinese blue and white teapot and metal mounted jar and cover, Qing Dynasty, Kangxi Period (1662–1722) the teapot including handle 16cm high

清 康熙 青花茶壺與金屬罐 (有蓋)

**\$600–800****681**

A collection of five Chinese blue and white cups and vessels, Qing Dynasty, Kangzhi Period (1662–1722) comprising two vases, two stemmed beakers and a bowl the tallest vase 13cm high, bowl 11.2cm diameter

清 康熙 青花杯, 瓶與碗 五件

**\$300–500****682**

A collection five Chinese blue and white vases, Qing Dynasty, Kangxi Period (1662–1722) comprising two metal mounted vases, a baluster formed vase and a covered vase and a gourd shaped vase variously decorated with figures and foliage the tallest 18cm high

清 康熙 青花瓶五件

**\$400–600****683**

A large collection of various Chinese and Asian Art catalogues and magazines

**\$200–300**



## Other Properties

**684**

A pair of Chinese porcelain tea bowls decorated with flowers and phoenix within diaper borders  
9cm diameter (each)

茶碗一對

**\$200-300**

**685**

A Chinese blue and white vase, possibly late Qing Dynasty in the Transitional style decorated with a landscape and a galloping horse and rider  
26cm high

約晚清 青花瓶

**\$600-800**

**686**

A pair of Chinese blue and white vases, Chien Lung mark, 20th century  
29cm high

二十世紀 乾隆款 青花瓶一對

**\$500-800**

**687**

A Chinese jar, Han dynasty  
46cm high, 34cm diameter

漢代 壺

**\$2,500-3,500**

**688**

A Chinese jar, Han dynasty  
45cm high, 34cm diameter

漢代 壺

**\$2,500-3,500**



684



685



686

**689**

A Chinese blue and white bowl, late Qing Dynasty  
9.5cm high, 19.2cm diameter  
晚清 青花碗

**\$1,800–2,500**



689

**690**

Two Chinese grain jar, Han dynasty  
the tallest 33cm high, 19cm diameter  
漢代 壺一對

**\$2,700–3,200**

**691**

A Chinese carved cherrywood and marble stand  
75cm high, 38cm diameter  
櫻桃木座

**\$400–600**

**692**

A Chinese carved russet and white carving modelled as a peony with a bird, with a double tassel  
3cm high, 6.5cm wide

**\$800–1,200**

**693**

A Chinese white jade carving modelled as a recumbent figure  
5.5cm high, 11cm wide  
白玉臥像

**\$600–800**

**694**

A pair of large Chinese export glazed ceramic Phoenix, 20th century  
120cm high  
陶瓷鳳凰雕一對

**\$500–800**

**695**

A pair of Chinese rosewood and elm scholars chairs, 20th century  
二十世紀 花梨木扶手椅一對

**\$600–800**

**696**

A Tibetan gilt copper alloy figure of Vajrapani and Consort heavily cast in multiple parts, modelled as the fierce protector of Buddhism, holding attributes below a flaming mandorla  
24cm high  
鍍金青銅菩薩

**\$1,000–1,500**

**697**

A large Chinese celadon dish,  
Ming Dynasty (1368-1644)  
the fluted serpentine edge dish  
centred by a central decoration of  
underglaze trellis, clouds and leaves  
30.5cm diameter

明 青磁盤

**\$1,500–2,500**

**698**

A pair of Korean celadon Meiping vases  
each with all over decoration of circular  
roundels and cranes flying within clouds  
42cm high

**NOTE**

For a similar example see The  
Art Gallery of NSW Collection  
No. 38.2009, from the Bequest  
of James Plimsoll, 1988

韓國 青磁梅瓶一對

**\$1,200–1,500**

**699**

A Chinese hardwood folding  
horseshoe-back armchair,  
Jiaoyi, 19th/20th century  
with a rounded crest rail and out  
swept arms, the seat frame carved  
with two chilong and foliate scrolls  
and stylised bamboo form struts  
104cm high

十九/二十世紀 硬木交椅

**\$2,000–3,000**

**700**

A pair of Chinese export porcelain  
vases, Hsien Feng mark, 20th century  
of tapering fluted form decorated  
with peony and leafy foliage  
28cm high (each)

二十世紀 咸豐款 瓷瓶一對

**\$400–600**

**701**

A Chinese peach bloom beehive  
form coupe, Kangxi mark  
9.5cm high (not including  
stand), 13cm diameter

**PROVENANCE**

Asian Art, Bonhams, Sydney,  
1 September 2014, Lot 10 康熙  
款 桃色堡型壺 源流: 2014 悉尼  
Bonhams 亞洲藝品拍賣 Lot 10

**\$2,000–3,000**



697



698



702



703

**702**

A large Chinese two-handled polychrome decorated censer and cover, late 19th Century  
41cm high  
十九世紀晚期 粉彩香爐

**\$1,500–2,000**

**703**

A large Chinese porcelain famille verte vase, 20th century  
58cm high  
二十世紀 粉彩瓷瓶

**\$3,000–5,000**

**704**

A pair of Chinese polychrome vases, Republic Period (1912–1949)  
each of baluster form decorated with an erotic scene  
12cm high  
民國 人像花瓶一對

**\$500–800**

**705**

A large Chinese export polychrome decorated dish, 18th century decorated and gilded throughout with birds flying amongst foliage  
35cm diameter  
十八世紀 花鳥碟

**\$3,000–5,000**

**706**

A Chinese famille rose dragon saucer dish, Chien Lung mark  
4cm high, 24.5cm diameter

**PROVENANCE**

Chinese and Asian Works of Art,  
Bonhams, 8 July 2015, Lot 233  
清 乾隆款 粉彩龍紋碟

**\$100–200**

**707**

A pair of Chinese Han style green glazed ceremonial miniature tomb ornaments  
19cm high, 14cm wide, 6.5cm  
漢代風格 小型綠釉飾品一對

**\$400–600**



705



706





708



709



710

### 708

A Chinese sang de boeuf and apple green glazed jar and cover, late Qing Dynasty  
16.5cm high

#### PROVENANCE

Decorative Arts, Christie's, 12 November 1988, Lot 387  
晚清 紅釉與青綠罐 源流:  
1988 十一月 佳士得拍賣

**\$300-500**

### 709

A Japanese cloisonné vase, 20th century decorated with scrolling flowers on a rich, red ground  
26.5cm high  
二十世紀 日本景泰藍壺

**\$800-1,200**

### 710

A matched pair of Chinese sang de boeuf vases by Hsiao Fang Tsai, 20th century each of squat, ovoid form with a rich ox blood ruby red glaze, signed  
24cm high, 36cm diameter  
蔡曉芳 紅釉瓶一對

**\$1,200-1,500**

**711**

A Chinese polychrome decorated sang de bouef vase, circa 1900  
24.5cm high

約二十世紀初期 多色紅釉瓶

**\$500-800**

**712**

A pair of Chinese Hongmu mother-of-pearl inlaid brush pots, 20th century  
23cm high, 9.8cm diameter

二十世紀 紅木與珍珠母筆筒一對

**\$300-500**

**713**

A Chinese scroll painting of a quail  
signed 33 x 25cm,  
156.5 x 40cm (overall)

**\$200-300**

**714**

Three Chinese scrolls  
the frog painting 63 x 32cm

**\$400-600**

**715**

A pair of Chinese blue and white  
floor vases, 20th century  
decorated with horses in a  
landscape, pierced lug handles  
63cm high (each)

二十世紀 大型青花瓶一對

**\$800-1,200**

**716**

A small Chinese peach bloom bottle  
vase, Kangxi mark, Republic Period  
14cm high

民國 康熙款 桃花瓶

**\$300-400**

**717**

A Chinese Ming style sancai glazed  
pottery figure, 20th century  
51cm high

二十世紀 三彩釉陶像

**\$80-120**

**718**

A Chinese famille rose pink-  
ground 'sgraffiato' vase Qianlong  
seal mark, Republic Period  
enamelled with shaped cartouches  
enclosing birds and flowers  
on the bright pink ground  
incised with a dense scrolling motif.  
19cm high

民國 乾隆款 粉色雕刻瓶

**\$350-450**

**719**

A small Korean elm scholar's  
chest, 19th century  
36cm high, 90cm wide, 31cm deep

**\$400-600**

**720**

A Chinese calligraphy and  
landscape scroll  
33.5 x 268cm

**\$200-300**



711



712



721

**721**

A large Japanese Shibayama tusk vase, dated 1937 decorated with a profusion of mother-of-pearl inlaid flowers emanating from a vase on an oriental pedestal, the reverse with a lantern and peonies inscribed to base: 'presented to W. H. Telfer Esq. by the Coventry Colliery Sports & Social Club., Aug. 21 / 1937.' 29cm high, 13.5cm wide including stand 39cm high  
年款 芝山象牙瓶

**\$4,000–6,000 ♦**

**722**

A Chinese carved lacquer scholar's stand 6cm high, 25cm wide, 15cm deep  
紅漆書架

**\$300–500**

**723**

A Thai bronze figural lamp, 20th century modelled as a standing crowned Kinnara 88cm high

**\$300–500**

**724**

A Chinese carved horn ornament, probably late 19th / early 20th century 6cm high, 12cm wide, 9cm deep  
十九世紀晚期/ 二十世紀早期 犄角雕刻

**\$500–800 ♦**

**725**

A large Chinese blue and white decorated vase, 20th century decorated with a deer in a wooded landscape 58cm high  
二十世紀 青花長瓶

**\$600–800**

**726**

A Chinese bronze figure of Buddha, probably late Qing Dynasty 26cm high  
約晚清 菩薩銅像

**\$1,200–1,500**



722

**727**

A Ming bronze figure of an official, probably early 17th century the seated figure with clasped hands, traces of lacquer and gilding

15cm high

約十七世紀早期 明代官員銅像

**\$2,000–3,000**

**728**

A Ming bronze figure of a seated deity, possibly 17th century the figure seated in the lotus position with hands in abhaya mudra, traces of lacquer and gilding

23cm high

約十七世紀 銅製神座

**\$1,500–2,000**

**729**

A Chinese underglaze blue and enamel vase, in the Kangxi style, possibly 19th century decorated with a continuous scene of figure and a phoenix in a trellised garden setting

21cm high

約十九世紀 康熙款 琺瑯藍釉瓶

**\$650–750**

**730**

A Chinese Enamel Porcelain Bowl, 19th century, decorated with four enamel roundels, marked with a Taoist precious symbol to the base

5.5cm high, 14.5cm diameter

十九世紀 搪瓷碗

**\$250–350**

**731**

A Chinese Longquan wine jug, possibly early Song Dynasty with a soft cream glaze

17.5cm high

**\$900–1,200**

**732**

A Chinese Imari porcelain saucer dish

28cm diameter

**\$80–120**

**733**

Two Chinese carved jade camels, 20th century the largest 10.5cm high

二十世紀 玉雕駱駝一對

**\$800–1,200**



727



728



734

**734**

A Chinese tea dust vase,  
possibly 19th century  
12cm high  
約十九世紀 墨綠釉壺

**\$600–800**

**735**

A pair of Chinese tea dust  
baluster vases  
33cm high  
茶色花瓶柱一對

**\$1,800–2,200**

**736**

A pale celadon jade figure of a boy  
Qing dynasty, 19th century  
seated on a large ribbed gourd  
and holding a lotus stem  
7cm high  
清(十九世紀) 男孩玉雕

**\$200–300**



735





737

**737**

A Chinese Longquan celadon carved jar and cover, Song Dynasty, early 12th century with a ribbed ovoid body carved with a band of overlapping upright petals below four convex bands, the wide neck flanked by lug handles, the domed cover with everted rim and a flanged ring below a pierced bud-shaped finial, crackled translucent green glaze 28.5cm high

宋代 十二世紀早期 龍泉青瓷罐

**\$3,000–4,000**

**738**

A Longquan celadon peony vase, possibly 14th century of baluster form with a stepped foot, the body decorated with shaped cartouches enclosing scrolling peony within lappet borders, rising to a scalloped everted rim, soft grey green glaze 23cm high

約十四世紀 龍泉青瓷牡丹花瓶

**\$1,200–1,500**



738

**739**

A Chinese ivory puzzle ball 28cm high  
象牙球

**\$100–200 ♦**

**740**

A Chinese spinach jade lotus form circular box and cover, Late Qing Dynasty (1644–1911) 9cm diameter

**PROVENANCE**

*The Decorative Arts Collection of James Fairfax AC, Leonard Joel, Sydney, 31 August 2017, Lot 175 Originally purchased from Sotheby's prior to 1976 晚清 碧玉蓮花圓盒 源流: 2017 悉尼 Leonard Joel James Fairfax AC 拍賣 1976 蘇富比*

**\$3,000–5,000**



739



741



742



743



744

**741**

A Chinese rock crystal brush washer,  
possibly 18th century carved  
with otters and ling zhi fungus  
3.5cm high, 8.5cm wide  
約十八世紀 水獺筆洗

**\$650-750****742**

A Chinese carved jade bowl and  
cover on stand, 20th century  
finely pierced and reticulated  
with scroll handles  
14cm high, 18.5cm across the  
handles (including cover)  
二十世紀 玉雕碗 (有蓋)

**\$1,000-1,500****743**

A Chinese carved jade bracelet  
with ten beads 玉手環

**\$200-300****744**

A Chinese carved agate bracelet  
12 beads  
瑪瑙手環

**\$300-500**

**745**

A Chinese jade carving modelled  
as a recumbent lion  
5cm wide, 3cm deep  
白玉獅雕

**\$600-800**

**746**

A Chinese carved jade plaque  
relief carved with a Tao Tieh  
4.5cm high, 8cm wide  
饕餮雕刻玉牌

**\$300-500**

**747**

Two Chinese jade carvings,  
20th century  
each in the form of a rider  
on a bactrian camel  
the largest 7.5cm high  
二十世紀 玉雕像一對

**\$800-1,200**

**748**

A green and russet jadeite  
pendant, late 19th/20th century  
carved and pierced with lingzhi  
and a bat resting above  
6.5cm high  
十九/二十世紀 棕綠翡翠墜飾

**\$200-300**

**749**

A small collection of Arts  
of Asia periodicals  
11 volumes

**\$60-80**

**750**

A pair of Chinese camphor chests  
44cm high, 96cm wide, 65cm deep  
樟木箱 一對

**\$1,000-1,200**

**751**

A Chinese tea caddy  
18cm high, 12cm wide, 7cm deep  
茶葉罐

**\$300-500**



745



746



747



752

**752**

A Chinese celadon jade snuff bottle carved with a galloping horse and a calligraphy panel, red hardstone stopper  
6cm high  
青磁鼻煙壺

**\$300–500****753**

A Chinese celadon jade snuff bottle carved with a group of sages and a calligraphy panel, hardstone stopper  
6.5cm high  
青磁鼻煙壺

**\$300–500**

753

**754**

A Chinese jade brush washer carved as a lotus pad and flower  
3.5cm high, 16.5cm wide, 6.5cm deep  
蓮花玉雕筆洗

**\$500–800****755**

A Chinese carved Hongmu Brush Pot  
15cm high, 13.5cm diameter  
紅木筆洗

**\$600–800****756**

A small Song style bowl  
10.5cm diameter

**\$40–60****757**

A small Chinese bronze mirror in the 8th century style, decorated with coiling Tao Tieh within a scrolling border  
9cm diameter

**NOTE**

For a similar example see the Collection of The Minneapolis Institute of Art, accession number 52.11.10

小型銅鏡

註：相似品展於美國The Minneapolis Institute of Art 編號 52.11.10

**\$600–800****758**

A Chinese carved jade plaque, 20th century  
7.5cm high, 5cm wide

**\$300–500****759**

A Chinese carved jade pendant, 20th century of shaped oval form decorated with phoenix and calligraphy panels  
6cm high

**\$400–600**

754



760

**760**

A Chinese pale celadon carved jade plaque decorated with a landscape scene  
7cm high, 4cm wide  
山水玉雕牌

**\$800–1,200**

761

**761**

A Chinese celadon jade bi-disc carved with phoenix and dragons  
8cm diameter  
龍鳳玉碟

**\$1,000–1,500****762**

A Chinese carved jade plaque decorated with a cockerel and a calligraphy panel  
6cm high, 4cm wide  
雞雕玉牌

**\$600–800**

762





763

**763**

A Chinese pale celadon carved jade pendant of oval form decorated with figures and calligraphy  
5.5cm high, 4cm wide  
玉雕牌

**\$600–800****764**

A Chinese jade carving modelled as the happy buddha  
7cm high  
白玉佛陀

**\$600–800****765**

A Chinese white jade snuff bottle carved with bat lug handles, red hardstone stopper  
5.5cm high  
白玉鼻煙壺

**\$600–800**

764



765



766

**766**

A Chinese jade carving modelled  
as a recumbent water buffalo  
7.5cm wide, 4cm deep  
白玉水牛

**\$800–1,200**

**767**

A Chinese famille verte baluster  
vase mounted as a lamp, late  
Qing Dynasty, 19th century  
with a pleated cream shade  
65cm high  
晚清 花瓶檯燈

**\$800–1,200**

**768**

A Chinese cloisonné lobed vase,  
late 19th, early 20th century  
39cm high  
十九世紀晚期/ 二十世紀  
早期 景泰藍花瓶

**\$300–500**

**769**

A Japanese bronze vase, Meiji period  
52cm high  
明治時期 日本銅瓶

**\$200–300**

**770**

A Japanese bronze  
Hibachi, 20th century  
25cm high  
二十世紀 日本銅盆

**\$200–300**

**771**

A large pair of Chinoiserie red and  
black lacquer decorated vases,  
Japanese, Meiji Period (1868–1912)  
63cm high  
明治時期 中國風格 紅黑花瓶一對

**\$800–1,200**

**772**

An album of Japanese wood block  
prints and watercolours, 19th century  
the largest 23 x 31cm

**\$300–400**

**773**

Two Japanese woodblock print  
triptychs, 19th century  
one depicting the family tree  
of the Tokugawa clan  
each panel, 36 x 23cm,  
overall 36 x 70cm  
the other depicting the  
diety aryaacalanatha  
each panel, 37 x 25cm,  
overall 37 x 70cm

**\$200–300**

**774**

A pair of Japanese cloisonné  
vases, Meiji period  
the first decorated with a long tailed bird  
on a blossoming bough 12.3cm high  
the second decorated with a dragon  
on a turquoise ground 12.5cm high  
明治時期 景泰藍瓶一對

**\$200–300**

**775**

A Korean elm metal mounted  
cabinet, 20th century  
91cm high, 105cm wide, 45cm deep

**\$200–300**

**776**

Three Malaysian Kris  
each of typical form with carved handle  
and serpentine watered blades  
longest 51.5cm

**\$400–600**



767



768

**End of Sale**

# Terms & Conditions of Sale

The terms and conditions of sale listed here contain the policies of Gibson's Auctioneers & Valuers Pty Ltd. They are the terms on which Gibson's Auctioneers & Valuers Pty Ltd and the Seller contract with the Buyer. They may be amended by printed Saleroom Notices or oral announcements made before and during the sale. By bidding at auction you agree to be bound by these terms.

## 1. Background to the Terms used in these Conditions

The conditions that are listed below contain terms that are used regularly and may need explanation. They are as follows:

"the Buyer" means the person with the highest bid accepted by the Auctioneer

"the Lot" means any item depicted within the sale for auction and in particular the item or items described against any lot number in the catalogue.

"the Hammer price" means the amount of the highest bid accepted by the auctioneer in relation to a lot

"the Buyers Premium" means the charge payable by the Buyer to the auction house as a percentage of the hammer price.

"the Reserve" means the lowest amount at which Gibson's Auctioneers & Valuers has agreed with the Seller that the lot can be sold.

"Forgery" means an item constituting an imitation originally conceived and executed as a whole, with a fraudulent intention to deceive as to authorship, origin, age, period, culture or source, where the correct description as to such matters is not reflected by the description in the catalogue. Accordingly no lot shall be capable of being a forgery by reason of any damage or restoration work of any kind (including re-painting).

"the insured value" means the amount that Gibson's Auctioneers & Valuers in its absolute discretion from time to time shall consider the value for which a lot should be covered for insurance (whether or not insurance is arranged by Gibson's Auctioneers & Valuers.)

All values expressed in Gibson's Auctioneers & Valuers Pty Ltd catalogues (in any format) are in Australian Dollars (AU\$). All bids, "hammer price", "reserves", "Buyers Premium" and other expressions of value are understood by all parties to be in Australian Dollars (AU\$) unless otherwise specified.

## 2. Gibson's Auctioneers & Valuers Auctions as Agent

Except as otherwise stated Gibson's Auctioneers & Valuers Pty Ltd acts as agent for the Seller.

The contract for the sale of the property is therefore made between the Seller and the Buyer.

## 3. Before the Sale

### A) EXAMINATION OF PROPERTY

Prospective Buyers are strongly advised to examine in person any property in which they are interested before the Auction takes place. Neither Gibson's Auctioneers & Valuers nor the Seller provides any guarantee in relation to the nature of the property apart from the Limited warranty in the paragraph below.

The property is otherwise sold "AS IS"

### B) CATALOGUE AND OTHER DESCRIPTIONS

All statements by Gibson's Auctioneers & Valuers in the catalogue entry for the property or in the condition report, or made orally or in writing elsewhere, are statements of opinion and are not

to be relied upon as statements of fact. Such statements do not constitute a representation, warranty or assumption of liability by Gibson's Auctioneers & Valuers of any kind. References in the catalogue entry to the condition report to damage or restoration are for guidance only and should be evaluated by personal inspection by the bidder or a knowledgeable representative. The absence of such a reference does not imply that an item is free from defects or restoration, nor does a reference to particular defects imply the absence of any others. Estimates of the selling price should not be relied on as a statement that this is the price at which the item will sell or it's value for any other purpose. Neither Gibson's Auctioneers & Valuers nor The Seller is responsible for any errors or omissions in the catalogue or any supplemental material.

Images are measured height by width (sight size). Illustrations are provided only as a guide and should not be relied upon as a true representation of colour or condition. Images are not shown at a standard scale. Mention is rarely made of frames (which may be provided as supplementary images on the website) which do not form part of the lot as described in the printed catalogue.

Foreign buyers should note that all transactions are in Australian dollars (AU\$) so there may be a small exchange rate risk. The costs associated with acquiring a good certificate will be carried by the purchaser. If the item turns out to be forged or otherwise incorrectly described, all reasonable costs will be borne by the vendor.

### C) BUYERS RESPONSIBILITY

All property is sold "as is" without representation or warranty of any kind by Gibson's Auctioneers & Valuers or the Seller. Buyers are responsible for satisfying themselves concerning the condition of the property and the matters referred to in the catalogue by requesting a condition report

## 4. At the Sale

### A) REFUSAL OF ADMISSION

Gibson's Auctioneers & Valuers reserves the right at our complete discretion to refuse admission to the auction premises or participation in any auction and to reject any bid.

### B) REGISTRATION BEFORE BIDDING

Any prospective new buyer must complete and sign a registration form and provide photo-identification before bidding. Gibson's Auctioneers & Valuers may request bank, trade or other financial references to substantiate this registration.

### C) BIDDING AS A PRINCIPAL

When making a bid, a bidder is accepting personal liability to pay the purchase price including the buyers premium and all applicable taxes, plus all other applicable charges, unless it has been explicitly agreed in writing with Gibson's Auctioneers & Valuers before the commencement of the sale that the bidder is acting as agent on behalf of an identified third party acceptable to Gibson's Auctioneers & Valuers and that Gibson's Auctioneers & Valuers will only look to the principal for payment.

### D) INTERNATIONAL REGISTRATIONS

All international clients not known to Gibson's Auctioneers & Valuers will be required to scan or fax through an accredited form of photo identification and pay a deposit at our discretion in cleared funds into Gibson's Auctioneers & Valuers' account at least 48 hours before the commencement of the auction. Bids will not be accepted without this deposit. Gibson's Auctioneers & Valuers also reserves the

right to request any additional forms of identification prior to registering an overseas bid.

This deposit can be made using a credit card, however the balance of any purchase price in excess of \$5,000 can not be charged to this card without prior arrangement. This deposit is redeemable against any auction purchase.

### E) ABSENTEE BIDS

Gibson's Auctioneers & Valuers will use reasonable efforts to execute written bids delivered to us AT LEAST 24 Hours before the sale for the convenience of those clients who are unable to attend the auction in person. If we receive identical written bids on a particular lot, and at the auction these are the highest bids on that lot, then the lot will be sold to the person whose written bid was received and accepted first. Execution of written bids is a free service undertaken subject to other commitments at the time of the sale and we do not accept liability for failing to execute a written bid or for errors or omissions which may arise. It is the bidder's responsibility to check with Gibson's Auctioneers & Valuers after the auction if they were successful. Unlimited or "Buy" bids will not be accepted. Please refer to our indicative bidding increments below for appropriate absentee bid amounts (Section K).

### F) TELEPHONE BIDS

Priority will be given to overseas and interstate bidders. Arrangements for this service must be confirmed AT LEAST 24 HOURS PRIOR to the auction commencing. Gibson's Auctioneers & Valuers accepts no responsibility whatsoever for any errors or failure to execute bids. In telephone bidding the buyer agrees to be bound by all terms and conditions listed here and accepts that Gibson's Auctioneers & Valuers cannot be held responsible for any mis-communications in the process. The success of telephone bidding cannot be guaranteed due to circumstances that are unforeseen. Buyers should be aware of the risk and accept the consequences should contact be unsuccessful at the time of Auction. You must advise Gibson's Auctioneers & Valuers of the lots in question and recommend a 'Cover Bid' amount should there be any issues with technology or communication via the telephone number provided. Gibson's Auctioneers & Valuers will advise Telephone Bidders who have registered at least 24 hours before the auction of any relevant changes to descriptions, withdrawals or any other sale room notices.

### G) ONLINE BIDDING

Gibson's Auctioneers & Valuers accepts no responsibility for any errors, failure to execute bids or any other miscommunications regarding this process. It is the online bidder's responsibility to ensure the accuracy of the relevant information regarding bids, lot numbers and contact details.

### H) RESERVES

Unless otherwise indicated, all lots are offered subject to a reserve, which is the confidential minimum price below which the Lot will not be sold. The reserve will not exceed the low estimate printed in the catalogue. The auctioneer may open the bidding on any Lot below the reserve by placing a bid on behalf of the Seller. The auctioneer may continue to bid on behalf of seller up to the amount of the reserve, either by placing consecutive bids or by placing bids in response to other bidders.

### I) AUCTIONEERS DISCRETION

The Auctioneer has the right at his absolute and sole discretion to refuse any bid, to advance the bidding in such a manner as he may decide, to withdraw or divide any lot, to combine any two or more lots and, in the case of error or dispute and whether during or

after the sale, to determine the successful bidder, to continue the bidding, to cancel the sale or to reoffer and resell the item in dispute. If any dispute arises after the sale, then Gibson's Auctioneers & Valuers's sale record is conclusive.

#### J) SUCCESSFUL BID AND PASSING OF RISK

Subject to the Auctioneer's discretion, the highest bidder accepted by the auctioneer will be the buyer and the striking of his hammer marks the acceptance of the highest bid and the conclusion of a contract for sale between the Seller and the Buyer. Risk and responsibility for the lot (including frames or glass where relevant) passes immediately to the Buyer.

#### K) INDICATIVE BIDDING STEPS, ETC.

Gibson's Auctioneers & Valuers reserves the right to refuse any bid, withdraw any lot from sale, to place a reserve on any lot and to advance the bidding according to the following:

Increment Amount	Dollar Range
\$20	\$0-\$500
\$50	\$500-\$1,000
\$100	\$1,000-\$2,000
\$200	\$2,000-\$5,000
\$500	\$5,000-\$10,000
\$1,000	\$10,000-\$20,000
\$2,000	\$20,000-\$50,000
\$5,000	\$50,000-\$100,000
\$10,000	\$100,000-\$200,000
\$20,000	\$200,000-\$500,000
\$50,000	\$500,000-\$1,000,000

Absentee bids must follow these increments and any bids that don't follow the steps will be rounded up to the nearest acceptable bid.

## 5. After the Sale

#### A) BUYERS PREMIUM

In addition to the hammer price, the buyer agrees to pay to Gibson's Auctioneers & Valuers the buyers premium. The buyer's premium is 22% of the hammer price plus GST. (Goods and Services Tax) where applicable.

#### B) PAYMENT AND PASSING OF TITLE

The buyer must pay the full amount due (comprising the hammer price, buyers premium and any applicable taxes and GST) not later than three (3) days after the auction date.

The buyer will not acquire title for the lot until Gibson's Auctioneers & Valuers receives full payment in cleared funds, and no goods under any circumstances will be released without confirmation of cleared funds received. This applies even if the buyer wishes to send items interstate or overseas.

Payment can be made by the following means:

- Bank Transfer/Direct Deposit is our preferred method of payment

Account Name: Gibsons Auctions  
Bank: Bank of Melbourne  
(A division of St George)  
BSB: 193879  
Account No: 441701443  
Swift Code: SGBLAU2S  
Routing Code: 021000021  
Bank Address: 197-201 Glenferrie Road,  
Malvern, Vic, 3144

The buyer is responsible for any bank fees and charges applicable for the transfer of funds into Gibson's Auctioneers & Valuers's account

- Personal, Company and Bank Cheques are not accepted without prior approval.
- Eftpos (no charge)

- Credit cards: Visa and Mastercard (1.2% incl GST merchant fee) and American Express (3% incl GST merchant fee)  
Please note that credit card transactions over \$5,000 will not be accepted over the telephone unless by prior arrangement.
- Cash up to AU\$10,000 can be accepted in cash. For any amount over this, cash is to be deposited directly into our account at a Bank of Melbourne/St George branch

#### C) COLLECTION OF PURCHASES & INSURANCE

Gibson's Auctioneers & Valuers is entitled to retain items sold until all amounts due to us have been received in full in good cleared funds. Subject to this, the Buyer shall collect purchased lots within three (3) days from the date of the sale unless otherwise agreed in writing between Gibson's Auctioneers & Valuers and the Buyer.

At the fall of the hammer, insurance is the responsibility of the purchaser.

#### D) PACKING, HANDLING AND SHIPPING

At the request of the buyer, Gibson's Auctioneers & Valuers may assist with packing of goods but takes no responsibility for loss, damage or breakage that may occur.

Gibson's Auctioneers & Valuers at the request of the buyer may arrange for a carrier, packer or shipper to have the property packed, insured and shipped at the buyer's expense. All packing, shipping, insurance, postage & associated charges will be borne by the purchaser.

Gibson's Auctioneers & Valuers can assist with removal companies that the buyer can use but takes no responsibility whatsoever for the actions of any recommended third party.

#### E) CULTURAL HERITAGE EXPORT LICENCES

Unless otherwise agreed by us in writing, the fact that the buyer wishes to apply for an export licence does not affect his or her obligation to make full payment immediately, nor our right to charge interest or storage charges on late payment. It is the Buyer's responsibility to check Australia's Protection of Moveable Cultural Heritage Act 1986 before purchase. If the Buyer requests Gibson's Auctioneers & Valuers to apply for an export licence then we shall be entitled to charge a fee for this service. We shall not be obliged to rescind a sale nor to refund any interest or other expenses incurred by the Buyer where payment is made by the Buyer in circumstances where an export licence is not granted.

#### F) REMEDIES FOR NON-PAYMENT

If the Buyer fails to make full payment immediately, Gibson's Auctioneers & Valuers is entitled to exercise one or more of the following rights or remedies (in addition to asserting any other rights or remedies available under the law)

- to charge interest at the ANZ visa credit card rate as published weekly in the Australian Financial Review
- to hold the defaulting Buyer liable for the total amount due and to commence legal proceedings for its recovery along with interest, legal fees and costs to the fullest extent permitted under applicable law
- to cancel the sale
- to resell the property publicly or privately on such terms as we see fit
- to pay the Seller an amount up to the net proceeds payable in respect of the amount bid by the defaulting Buyer. In these circumstances the defaulting Buyer can have no claim upon Gibson's Auctioneers & Valuers in the event that the item(s) are sold for an amount greater than the original invoiced amount.

- to set off against any amounts which Gibson's Auctioneers & Valuers may owe the Buyer in any other transactions, the outstanding amount remaining unpaid by the Buyer.
- where several amounts are owed by the Buyer to us, in respect of different transactions, to apply any amount paid to discharge any amount owed in respect of any particular transaction, whether or not the Buyer so directs.
- to reject any future auction any bids made by or on behalf of the Buyer or to obtain a deposit from the Buyer prior to accepting any bids.
- to exercise all the rights and remedies of a person holding security over any property in our possession owned by the Buyer whether by way of pledge, security interest or in any other way, to the fullest extent permitted by the law of the place where such property is located. The Buyer will be deemed to have been granted such security to us and we may retain such property as collateral security for such Buyer's obligations to us.
- to take such other action as Gibson's Auctioneers & Valuers deem necessary or appropriate

If we do sell the property under paragraph (iv), then the defaulting Buyer shall be liable for payment of any deficiency between the total amount originally due to us and the price obtained upon reselling as well as for all costs, expenses, damages, legal fees and commissions and premiums of whatever kinds associated with both sales or otherwise arising from the default.

If we pay any amount to the Seller under paragraph (v) the Buyer acknowledges that Gibson's Auctioneers & Valuers shall have all of the rights of the Seller, however arising, to pursue the Buyer for such amount.

#### G) FAILURE TO COLLECT PURCHASES

Where purchases are not collected within three (3) days from the sale date, whether or not payment has been made, we shall be permitted to remove the property to a warehouse at the buyer's expense, and only release the items after payment in full has been made of removal, storage handling, insurance and any other costs incurred, together with payment of all other amounts due to us.

## 6. Extent of Gibson's Auctioneers & Valuers Liability

Gibson's Auctioneers & Valuers agrees to refund the purchase price in the circumstances of the Limited Warranty set out in paragraph 7 below. Apart from that, neither the Seller nor we, nor any of our employees or agents are responsible for the correctness of any statement of whatever kind concerning any lot, whether written or oral, nor for any other errors or omissions in description or for any faults or defects in any lots. Except as stated in paragraph 7 below, neither the Seller ourselves, our officers, agents or employees give any representation warranty or guarantee or assume any liability of any kind in respect of any lot with regard to merchantability, fitness for a particular purpose, description, size, quality, condition, attribution, authenticity, rarity, importance, medium, provenance, exhibition history, literature or historical relevance. Except as required by local law any warranty of any kind is excluded by this paragraph.

## 7. Limited Warranty

Subject to the terms and conditions of this paragraph, the Seller warrants for the period of fourteen (14) days from the date of the sale that any property described in this catalogue (noting such description may be amended by any saleroom notice or announcement) which is stated without qualification to be the work of a named author or

authorship is authentic and not a forgery. The term "Author" or "authorship" refers to the creator of the property or to the period, culture, source, or origin as the case may be, with which the creation of such property is identified in the catalogue.

The warranty is subject to the following:

- i) it does not apply where a) the catalogue description or sale room notice corresponded to the generally accepted opinion of scholars and experts at the date of the sale or fairly indicated that there was a conflict of opinions, or b) correct identification of a lot can be demonstrated only by means of a scientific process not generally accepted for use until after publication of the catalogue or a process which at the date of the publication of the catalogue was unreasonably expensive or impractical or likely to have caused damage to the property.
- ii) the benefits of the warranty are not assignable and shall apply only to the original buyer of the lot as shown on the invoice originally issued by Gibson's Auctioneers & Valuers when the lot was sold at Auction.
- iii) the Original Buyer must have remained the owner of the lot without disposing of any interest in it to any third party
- iv) The Buyer's sole and exclusive remedy against the Seller in place of any other remedy which might be available, is the cancellation of the sale and the refund of the original purchase price paid for the lot less the buyers premium which is non refundable. Neither the Seller nor Gibson's Auctioneers & Valuers will be liable for any special, incidental nor consequential damages including, without limitation, loss of profits nor for interest.
- v) The Buyer must give written notice of claim to us within fourteen (14) days of the date of the Auction. The Seller shall have the right, to require the Buyer to obtain two written opinions by recognised experts in the field, mutually acceptable to the Buyer and Gibson's Auctioneers & Valuers to decide whether or not to cancel the sale under warranty.
- vi) the Buyer must return the lot to Seller in the same condition that it was purchased.

## 8. Severability

If any part of these Conditions of Sale is found by any court to be invalid, illegal or unenforceable, that part shall be discounted and the rest of the Conditions shall continue to be valid to the fullest extent permitted by law.

## 9. Copyright

The copyright of all images, illustrations and written material produced by Gibson's Auctioneers & Valuers relating to a lot including the contents of this catalogue, is and shall remain the property at all times of Gibson's Auctioneers & Valuers and shall not be used by the Buyer, nor by anyone else without our prior written consent. Gibson's Auctioneers & Valuers and the Seller make no representation or warranty that the Buyer of a property will acquire any copyright or other reproduction rights in it.

## 10. Law and Jurisdiction

These terms and conditions and any matters concerned with the foregoing fall within the exclusive jurisdiction of the courts of the state in which the auction is held.

## 11. Pre-Sale Estimates

Gibson's Auctioneers & Valuers publishes with each catalogue our opinion as to the estimated price range for each lot. These estimates are approximate prices only and are not intended to be definitive. They are

prepared well in advance of the sale and may be subject to revision. Interested parties should contact Gibson's Auctioneers & Valuers prior to auction for updated pre-sale estimates and starting prices.

## 12. Sale results

Gibson's Auctioneers & Valuers will provide auction results, which will be available as soon as possible after the sale. Results will include buyer's premium (22% plus GST). These results will be posted at [www.gibsonsauctions.com.au](http://www.gibsonsauctions.com.au).

## 13. Goods and Service Tax

In accordance with A New Tax System (Goods and Services Tax) Act 1999 Gibson's Auctioneers & Valuers Auctions will collect on behalf of the Australian tax office (ATO) a Goods and Service Tax (GST) of 10% on all applicable transactions. ABN: 26 440 767 899

GST is applicable on the hammer price in the case where the seller is selling property that is owned by an entity registered for GST. GST is also applicable on the hammer price in the case where the seller is not an Australian resident. These lots are denoted by a dagger symbol † placed next to the estimate.

GST is also applicable on the buyer's premium.

Overseas buyers and buyers non-resident in Australia will not be charged GST on both hammer price and premiums under the following conditions:

1. The items are exported through a Gibson's Auctioneers & Valuers approved freight company including Australia Post
2. The items are exported within 60 days of the date of the sale

The invoice supplied by Gibson's Auctioneers & Valuers for purchases will be regarded as a Tax invoice for GST purposes.

## 14. Resale Royalty Scheme

Under the legal obligations of the Resale Royalty Scheme for Visual Artists Act 2009, sellers must provide the following information to comply with the act:

- was the artwork acquired after 8 June 2010?
- is the sale/reserve price (including GST) \$1,000 or more?
- is the artist from Australia or a country listed in the Regulations to the Act?
- is the artist alive, or deceased less than 70 years?

The seller:

- i) acknowledges that he or she understands his or her legal obligations under the Resale Royalty for Visual Artists Act 2009 (the Act);
- ii) undertakes to comply with all requirements of the Act, including by providing its agent, the company, with accurate information sufficient for compliance with sections 28 and 29 of the Act;
- iii) undertakes to indemnify the company for any loss incurred by the company as a result of the vendor's failure to comply with any of the vendor's legal obligations under the Act; and
- iv) acknowledges that if he or she fails to comply with any of his or her legal obligations under the Act, the company may provide the vendor's name and contact details to Copyright Agency Limited (CAL).

Lots subject to payment of the Resale Royalty Scheme will be denoted by the §. The Australian Resale Royalty is a flat rate of 5% on the hammer price (including GST). The Australian Resale Royalty is payable by the seller in addition to the buyers premium plus any applicable GST.

## 15. Jewels & Watches

### GEMSTONES

Gemstones have historically been subjected to a variety of treatments to enhance their appearance. Sapphire and rubies are routinely heat treated to improve their colour and clarity, similarly emeralds are frequently treated with oils or resin for the same purpose. Other treatments such as staining or dyeing, irradiation, filling or coating may have been used on other precious and semi-precious gemstones and organic material. These treatments may be permanent, whilst others may need special care to preserve their appearance. Buyers should assume that each lot has been subject to some form of treatment and that the estimates reflect this.

A number of laboratories issue certificates that give detailed descriptions of gemstones, and in the event that Gibson's Auctioneers & Valuers has been supplied with or obtained certificates for any lot, this shall be noted in the catalogue. However, as there may not be consensus between different laboratories on the degree, or types of treatment of the gemstones, Gibson's Auctioneers & Valuers supplies these without warranty.

Buyers should assume that all gemstones sold by Gibson's Auctioneers & Valuers may have been subjected to such treatments, and that the catalogue estimates reflect this.

### PEARLS

Pearls, like gemstones, are also subject to various treatments. Buyers should assume that any pearls sold by Gibson's Auctioneers & Valuers may have been subjected to such treatments, and that the catalogue estimates reflect this.

### WATCHES

Please note: All watches sold by Gibson's Auctioneers & Valuers are sold on an "as is" basis. Gibson's Auctioneers & Valuers makes no representation or warranty that any watch is in working order. Many watches have been repaired over their lifetime and may contain non-original parts. The absence of any reference to the condition of a watch does not imply that the lot is in good condition and without defects, repairs or restorations. Buyers should be aware that a general service, change of battery or further repair work, for which the Buyer is solely responsible for, may be necessary.

### ESTIMATED WEIGHTS

If a stone has a known weight, it has been weighed out of the mount. If a stone has an estimated weight, it is an approximate weight only and has been measured by us in the mount and is a statement of opinion only. The information is given as a guide only and Buyers should satisfy themselves with regard to this information as to its accuracy.